

TBL1Y Monoclonal Antibody

Description

Product type	Primary Antibody
Code	BT-MCA1188
Host	Mouse
Isotype	IgG
Size	50ul, 100ul
Immunogen	Purified recombinant human TBL1Y protein fragments expressed in E.coli.
Mol wt	N/A
Species reactivity	Human,Mouse,Rat,Dog,Pig
Clonality	Monoclonal
Recommended application	WB
Concentration	1 mg/ml
Full name	F-box-like,WD repeat-containing protein TBL1Y
Synonyms	TBL1Y; TBL1; F-box-like; WD repeat-containing protein TBL1Y; Transducin beta-like protein 1Y; Transducin-beta-like protein 1; Y-linked

This product is for research use only, not for use in human, therapeutic or diagnostic procedure.

Background

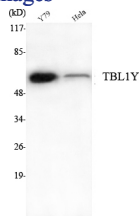
The protein encoded by this gene has sequence similarity with members of the WD40 repeat-containing protein family. The WD40 group is a large family of proteins, which appear to have a regulatory function. It is believed that the WD40 repeats mediate protein-protein interactions and members of the family are involved in signal transduction, RNA processing, gene regulation, vesicular trafficking, cytoskeletal assembly and may play a role in the control of cytotypic differentiation. This gene is highly similar to TBL1X gene in nucleotide sequence and protein sequence, but the TBL1X gene is located on chromosome X and this gene is on chromosome Y. This gene has three alternatively spliced transcript variants encoding the same protein.

Recommended Dilution

WB: 1:1000 - 1:2000

Not yet tested in other applications.

Images



Western Blot analysis using TBL1Y Monoclonal antibody against Y79, HeLa cell lysate.

Storage

-20°C for one year