

## TH-POK Monoclonal Antibody

### Description

<b>Product type</b>	Primary Antibody
<b>Code</b>	BT-MCA1203
<b>Host</b>	Mouse
<b>Isotype</b>	IgG
<b>Size</b>	50ul, 100ul
<b>Immunogen</b>	Purified recombinant fragment of human TH-POK expressed in E. Coli.
<b>Mol wt</b>	N/A
<b>Species reactivity</b>	Human
<b>Clonality</b>	Monoclonal
<b>Recommended application</b>	WB, IHC-p, IF, ICC, ELISA
<b>Concentration</b>	1 mg/ml
<b>Full name</b>	Zinc finger and BTB domain-containing protein 7B
<b>Synonyms</b>	ZBTB7B; ZBTB15; ZFP67; ZNF857B; Zinc finger and BTB domain-containing protein 7B; Krueppel-related zinc finger protein cKrox; hcKrox; T-helper-inducing POZ; Krueppel-like factor; Zinc finger and BTB domain-containing protein 15; Zinc finger

**This product is for research use only, not for use in human, therapeutic or diagnostic procedure.**

### Background

This gene encodes a zinc finger-containing transcription factor that acts as a key regulator of lineage commitment of immature T-cell precursors. It is necessary and sufficient for commitment of CD4 lineage, while its absence causes CD8 commitment. It also functions as a transcriptional repressor of type I collagen genes. Alternatively spliced transcript variants have been found for this gene.

### Recommended Dilution

ELISA: 1:10000

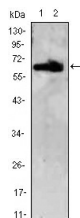
IF: 1:200 - 1:1000

IHC: 1:200 - 1:1000

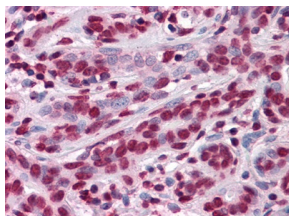
WB: 1:500 - 1:2000

Not yet tested in other applications.

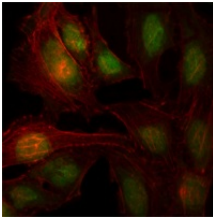
### Images



Western Blot analysis using TH-POK Monoclonal antibody against HEK293 (1.2) cell lysate.



Immunohistochemistry analysis of paraffin-embedded human Breast tissues with AEC staining using TH-POK Monoclonal antibody.



Immunofluorescence analysis of HeLa cells using TH-POK Monoclonal antibody (green). Red: Actin filaments have been labeled with Alexa Fluor-555 phalloidin

### Storage

-20°C for one year

501 Changsheng S Rd, Nanhu Dist, Jiaxing, Zhejiang, China

Tel: 86 21 31007137 | E-mail: [save@bt-laboratory.com](mailto:save@bt-laboratory.com) | [www.bt-laboratory.com](http://www.bt-laboratory.com)