

THAP11 Monoclonal Antibody

Description

Product type	Primary Antibody
Code	BT-MCA1204
Host	Mouse
Isotype	IgG
Size	50ul, 100ul
Immunogen	Purified recombinant fragment of human THAP11 expressed in E. Coli.
Mol wt	N/A
Species reactivity	Human
Clonality	Monoclonal
Recommended application	WB, IHC-p, IF, ICC, FCM, ELISA
Concentration	1 mg/ml
Full name	THAP domain-containing protein 11
Synonyms	THAP11; HRIHFB2206; THAP domain-containing protein 11

This product is for research use only, not for use in human, therapeutic or diagnostic procedure.

Background

The protein encoded by this gene contains a THAP domain, which is a conserved DNA-binding domain that has striking similarity to the site-specific DNA-binding domain (DBD) of Drosophila P element transposases.

Recommended Dilution

FC: 1:200 - 1:400

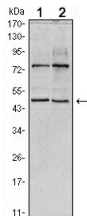
IF: 1:200 - 1:1000

IHC: 1:200 - 1:1000

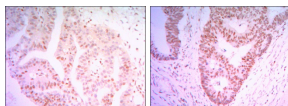
WB: 1:500 - 1:2000

Not yet tested in other applications.

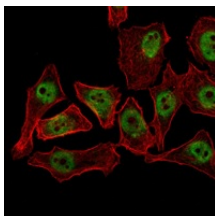
Images



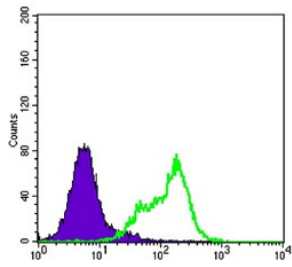
Western Blot analysis using THAP11 Monoclonal antibody against HeLa (1) and NTERA-2 (2) cell lysate.



Immunohistochemistry analysis of paraffin-embedded colon cancer tissues (left) and ovary cancer tissues (right) with DAB staining using THAP11 Monoclonal antibody.



Immunofluorescence analysis of NTERA-2 cells using THAP11 Monoclonal antibody (green). Red: Actin filaments have been labeled with Alexa Fluor-555 phalloidin.



Flow cytometric analysis of HeLa cells using THAP11 Monoclonal antibody (green) and negative control (purple).

Storage

-20°C for one year

501 Changsheng S Rd, Nanhu Dist, Jiaxing, Zhejiang, China

Tel: 86 21 31007137 | E-mail: save@bt-laboratory.com | www.bt-laboratory.com