

TIF1Beta Monoclonal Antibody

Description

Product type	Primary Antibody
Code	BT-MCA1206
Host	Mouse
Isotype	IgG
Size	50ul, 100ul
Immunogen	Purified recombinant human TIF1Beta (C-terminus) protein fragments expressed in E.coli.
Mol wt	N/A
Species reactivity	Human,Mouse,Rat,Dog,Rabbit
Clonality	Monoclonal
Recommended application	WB
Concentration	1 mg/ml
Full name	Transcription intermediary factor 1-beta
Synonyms	TRIM28; KAP1; RNF96; TIF1B; Transcription intermediary factor 1-beta; TIF1-beta; E3 SUMO-protein ligase TRIM28; KRAB-associated protein 1; KAP-1; KRAB-interacting protein 1; KRIP-1; Nuclear corepressor KAP-1; RING finger protein 96; Tripart

This product is for research use only, not for use in human, therapeutic or diagnostic procedure.

Background

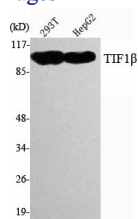
The protein encoded by this gene mediates transcriptional control by interaction with the Kruppel-associated box repression domain found in many transcription factors. The protein localizes to the nucleus and is thought to associate with specific chromatin regions. The protein is a member of the tripartite motif family. This tripartite motif includes three zinc-binding domains, a RING, a B-box type 1 and a B-box type 2, and a coiled-coil region.

Recommended Dilution

WB: 1:1000 - 1:2000

Not yet tested in other applications.

Images



Western Blot analysis using TIF1Beta Monoclonal antibody against 293T, HepG2 cell lysate.

Storage

-20°C for one year