

## TORC3 Monoclonal Antibody

### Description

<b>Product type</b>	Primary Antibody
<b>Code</b>	BT-MCA1217
<b>Host</b>	Mouse
<b>Isotype</b>	IgG
<b>Size</b>	50ul, 100ul
<b>Immunogen</b>	Purified recombinant fragment of human TORC3 expressed in E. Coli.
<b>Mol wt</b>	N/A
<b>Species reactivity</b>	Human,Monkey
<b>Clonality</b>	Monoclonal
<b>Recommended application</b>	WB, IHC-p, IF, ICC, ELISA
<b>Concentration</b>	1 mg/ml
<b>Full name</b>	CREB-regulated transcription coactivator 3
<b>Synonyms</b>	CRTC3; TORC3; CREB-regulated transcription coactivator 3; Transducer of regulated cAMP response element-binding protein 3; TORC-3; Transducer of CREB protein 3

**This product is for research use only, not for use in human, therapeutic or diagnostic procedure.**

### Background

This gene is a member of the CREB regulated transcription coactivator gene family. This family regulates CREB-dependent gene transcription in a phosphorylation-independent manner and may be selective for cAMP-responsive genes. The protein encoded by this gene may induce mitochondrial biogenesis and attenuate catecholamine signaling in adipose tissue. A translocation event between this gene and Notch coactivator mastermind-like gene 2, which results in a fusion protein, has been reported in mucoepidermoid carcinomas. Alternative splicing results in multiple transcript variants that encode different protein isoforms.

### Recommended Dilution

ELISA: 1:10000

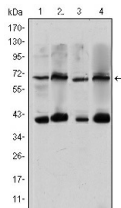
IF: 1:200 - 1:1000

IHC: 1:200 - 1:1000

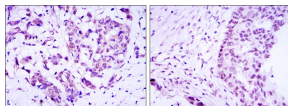
WB: 1:500 - 1:2000

Not yet tested in other applications.

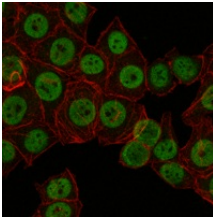
### Images



Western Blot analysis using TORC3 Monoclonal antibody against HeLa (1) Jurkat (2) Cos7 (3) and MCF-7 (4) cell lysate.



Immunohistochemistry analysis of paraffin-embedded breast cancer (left) and ovarian cancer (right) with DAB staining using TORC3 Monoclonal antibody.



Immunofluorescence analysis of NTERA-2 cells using TORC3 Monoclonal antibody (green). Red: Actin filaments have been labeled with Alexa Fluor-555 phalloidin.

### Storage

-20°C for one year

501 Changsheng S Rd, Nanhu Dist, Jiaxing, Zhejiang, China

Tel: 86 21 31007137 | E-mail: [save@bt-laboratory.com](mailto:save@bt-laboratory.com) | [www.bt-laboratory.com](http://www.bt-laboratory.com)