

## Transferrin Monoclonal Antibody(5F9)

### Description

<b>Product type</b>	Primary Antibody
<b>Code</b>	BT-MCA1228
<b>Host</b>	Mouse
<b>Isotype</b>	IgG
<b>Size</b>	20ul, 50ul, 100ul
<b>Immunogen</b>	Protein
<b>Mol wt</b>	N/A
<b>Species reactivity</b>	Human
<b>Clonality</b>	Monoclonal
<b>Recommended application</b>	IHC-p, IF, ELISA
<b>Concentration</b>	1 mg/ml
<b>Full name</b>	Serotransferrin
<b>Synonyms</b>	TF; Serotransferrin; Transferrin; Beta-1 metal-binding globulin; Siderophilin

**This product is for research use only, not for use in human, therapeutic or diagnostic procedure.**

### Background

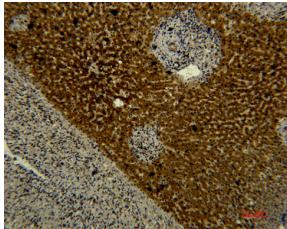
This gene encodes a glycoprotein with an approximate molecular weight of 76.5 kDa. It is thought to have been created as a result of an ancient gene duplication event that led to generation of homologous C and N-terminal domains each of which binds one ion of ferric iron. The function of this protein is to transport iron from the intestine, reticuloendothelial system, and liver parenchymal cells to all proliferating cells in the body. This protein may also have a physiologic role as granulocyte/pollen-binding protein (GPBP) involved in the removal of certain organic matter and allergens from serum.

### Recommended Dilution

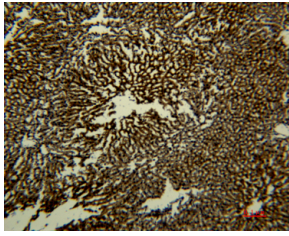
IHC: 1:100-200

Not yet tested in other applications.

### Images



Immunohistochemical analysis of paraffin-embedded human-liver using antibody diluted at 1:50.



Immunohistochemical analysis of paraffin-embedded rat-liver using antibody diluted at 1:50.

### Storage

-20°C for one year

501 Changsheng S Rd, Nanhu Dist, Jiaxing, Zhejiang, China

Tel: 86 21 31007137 | E-mail: [save@bt-laboratory.com](mailto:save@bt-laboratory.com) | [www.bt-laboratory.com](http://www.bt-laboratory.com)