

## Alpha-tubulin (Acetyl Lys40) Monoclonal Antibody(5H5)

### Description

Product type	Primary Antibody
Code	BT-MCA1309
Host	Mouse
Isotype	IgG
Size	20ul, 50ul, 100ul
Immunogen	Synthetic Peptide of $\alpha$ -tubulin (Acetyl Lys40)
Mol wt	N/A
Species reactivity	Human,Rat,Mouse
Clonality	Monoclonal
Recommended application	WB, IHC-p, IF
Concentration	1 mg/ml
Full name	Tubulin alpha-1B chain
Synonyms	Tubulin alpha-1B chain; Alpha-tubulin ubiquitous; Tubulin K-alpha-1; Tubulin alpha-ubiquitous chain

This product is for research use only, not for use in human, therapeutic or diagnostic procedure.

### Background

Tubulin is the major constituent of microtubules. It binds two moles of GTP, one at an exchangeable site on the beta chain and one at a non-exchangeable site on the alpha-chain.,PTM:Undergoes a tyrosination/detyrosination cycle, the cyclic removal and re-addition of a C-terminal tyrosine residue by the enzymes tubulin tyrosine carboxypeptidase (TTCP) and tubulin tyrosine ligase (TTL), respectively.,similarity:Belongs to the tubulin family.,subunit:Dimer of alpha and beta chains.,

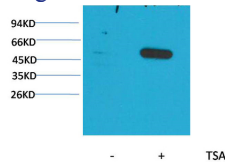
### Recommended Dilution

IHC: 1:100-200

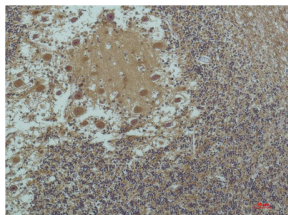
WB: 1:1000-2000

Not yet tested in other applications.

### Images



Western blot analysis of extracts from HeLa cells, untreated (-) or treated with TSA (1 $\mu$ M, 18 hr; +), using Acetyl-  $\alpha$ -tubulin(Lys40) Mouse Monoclonal antibody 1:2000.



Immunohistochemical analysis of paraffin-embedded Human Brain Tissue using  $\alpha$ -tubulin(Acetyl Lys40) Mouse Monoclonal antibody diluted at 1:200.

### Storage

-20°C for one year

