

## Beta I tubulin Monoclonal Antibody

### Description

Product type	Primary Antibody
Code	BT-MCA1323
Host	Mouse
Isotype	IgG
Size	20ul, 50ul, 100ul
Immunogen	Synthetic Peptide of Beta I tubulin
Mol wt	N/A
Species reactivity	Zebrafish
Clonality	Monoclonal
Recommended application	WB
Concentration	1 mg/ml
Full name	Tubulin beta-1 chain
Synonyms	TUBB1; Tubulin beta-1 chain; TUBB2A; TUBB2; Tubulin beta-2A chain; TUBB2B; Tubulin beta-2B chain; TUBB4B; TUBB2C; Tubulin beta-4B chain; Tubulin beta-2 chain; Tubulin beta-2C chain; TUBB3; TUBB4; Tubulin beta-3 chain; Tubulin beta-4 chain; Tubulin beta-III; TUBB4A; TUBB4; TUBB5; Tubulin beta-4A chain; Tubulin 5 beta; Tubulin beta-4 chain; TUBB; TUBB5; OK; SW-cl.56; Tubulin beta chain; Tubulin beta-5 chain; TUBB6; Tubulin beta-6 chain; TUBB8; Tubulin beta-8 chain

**This product is for research use only, not for use in human, therapeutic or diagnostic procedure.**

### Background

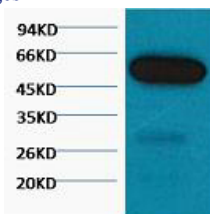
This gene encodes a member of the beta tubulin protein family. Beta tubulins are one of two core protein families (alpha and beta tubulins) that heterodimerize and assemble to form microtubules. This protein is specifically expressed in platelets and megakaryocytes and may be involved in proplatelet production and platelet release. A mutations in this gene is associated with autosomal dominant macrothrombocytopenia. Two pseudogenes of this gene are found on chromosome Y.

### Recommended Dilution

WB: 1:500-10000

Not yet tested in other applications.

### Images



Western blot analysis of Zebrafish skeletal muscle diluted at 1:5000.

### Storage

-20°C for one year