

Beta III tubulin Monoclonal Antibody(Mix)

Description

| | |
|-------------------------|--|
| Product type | Primary Antibody |
| Code | BT-MCA1324 |
| Host | Mouse |
| Isotype | IgG |
| Size | 20ul, 50ul, 100ul |
| Immunogen | Synthetic Peptide of Beta III tubulin |
| Mol wt | 50433 |
| Species reactivity | Human,Mouse,Rat |
| Clonality | Monoclonal |
| Recommended application | WB |
| Concentration | 1 mg/ml |
| Full name | Tubulin beta-3 chain |
| Synonyms | TUBB3; TUBB4; Tubulin beta-3 chain; Tubulin beta-4 chain; Tubulin beta-III |

This product is for research use only, not for use in human, therapeutic or diagnostic procedure.

Background

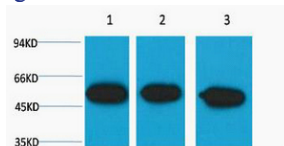
This gene encodes a class III member of the beta tubulin protein family. Beta tubulins are one of two core protein families (alpha and beta tubulins) that heterodimerize and assemble to form microtubules. This protein is primarily expressed in neurons and may be involved in neurogenesis and axon guidance and maintenance. Mutations in this gene are the cause of congenital fibrosis of the extraocular muscles type 3. Alternate splicing results in multiple transcript variants. A pseudogene of this gene is found on chromosome 6.

Recommended Dilution

WB: 1:5000

Not yet tested in other applications.

Images



Western blot analysis of 1) Hela, 2) Mouse Brain, 3) Rat Brain diluted at 1:5000.

Storage

-20°C for one year

501 Changsheng S Rd, Nanhu Dist, Jiaxing, Zhejiang, China

Tel: 86 21 31007137 | E-mail: save@bt-laboratory.com | www.bt-laboratory.com