

Beta-actin Monoclonal Antibody(5B7)

Description

Product type	Primary Antibody
Code	BT-MCA1326
Host	Mouse
Isotype	IgG
Size	20ul, 50ul, 100ul
Immunogen	Synthetic Peptide of Beta-actin
Mol wt	41737
Species reactivity	Human,Rat,Mouse,Monkey,Dog,Chicken,Hamster,Rabbit
Clonality	Monoclonal
Recommended application	WB
Concentration	1 mg/ml
Full name	Actin cytoplasmic 1
Synonyms	ACTB; Actin; cytoplasmic 1; Beta-actin; Actin Beta; Beta-Actin; Beta actin

This product is for research use only, not for use in human, therapeutic or diagnostic procedure.

Background

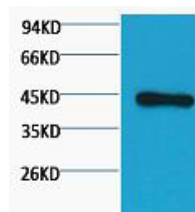
This gene encodes one of six different actin proteins. Actins are highly conserved proteins that are involved in cell motility, structure, and integrity. This actin is a major constituent of the contractile apparatus and one of the two nonmuscle cytoskeletal actins.

Recommended Dilution

WB: 1:2000-5000

Not yet tested in other applications.

Images



Western blot analysis of Hela diluted at 1:3000.

Storage

-20°C for one year

501 Changsheng S Rd, Nanhui Dist, Jiaxing, Zhejiang, China

Tel: 86 21 31007137 | E-mail: save@bt-laboratory.com | www.bt-laboratory.com