

Beta-actin Monoclonal Antibody(A02)

Description

| | |
|--------------------------------|---|
| Product type | Primary Antibody |
| Code | BT-MCA1339 |
| Host | Mouse |
| Isotype | IgG |
| Size | 20ul, 50ul, 100ul |
| Immunogen | Synthetic Peptide of Beta-actin |
| Mol wt | 41737 |
| Species reactivity | Human,Rat,Mouse,Monkey,Dog,Chicken,Hamster,Rabbit,Pig,sheep |
| Clonality | Monoclonal |
| Recommended application | WB |
| Concentration | 1 mg/ml |
| Full name | Actin cytoplasmic 1 |
| Synonyms | ACTB; Actin; cytoplasmic 1; Beta-actin |

This product is for research use only, not for use in human, therapeutic or diagnostic procedure.

Background

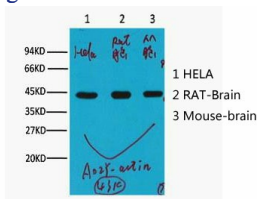
This gene encodes one of six different actin proteins. Actins are highly conserved proteins that are involved in cell motility, structure, and integrity. This actin is a major constituent of the contractile apparatus and one of the two nonmuscle cytoskeletal actins.

Recommended Dilution

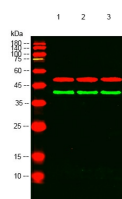
WB: 1:500-10000

Not yet tested in other applications.

Images



Western blot analysis of HeLa (1) Rat brain (2) Mouse brain (3) (A02) diluted at 1:10000.



Western blot analysis of lysates from 1) HeLa, 2) Rat brain, 3) Mouse brain cells, (Green) primary antibody was diluted at 1:1000, 4°C overnight, secondary antibody was diluted at 1:10000, 37°C 1hour. (Red) Tubulin Beta Polyclonal Antibody antibody was diluted at 1:5000 as loading control, 4°C overnight, secondary antibody was diluted at 1:10000, 37°C 1hour.

Storage

-20°C for one year