

Beta-tubulin (HRP Conjugated) Monoclonal Antibody(5G3)

Description

Product type	Primary Antibody
Code	BT-MCA1343
Host	Mouse
Isotype	IgG
Size	20ul, 50ul, 100ul
Immunogen	Recombinant Protein of Beta-tubulin (HRP Conjugated)
Mol wt	N/A
Species reactivity	Human,Rat,Mouse,Monkey,Dog,Chicken,Hamster,Rabbit,sheep,Insect,Yeast
Clonality	Monoclonal
Recommended application	WB, IF, ICC, IHC-p
Concentration	1 mg/ml
Full name	Tubulin beta chain
Synonyms	Tubulin beta chain; Tubulin beta-5 chain

This product is for research use only, not for use in human, therapeutic or diagnostic procedure.

Background

This gene encodes a beta tubulin protein. This protein forms a dimer with alpha tubulin and acts as a structural component of microtubules. Mutations in this gene cause cortical dysplasia, complex, with other brain malformations 6. Alternative splicing results in multiple splice variants. There are multiple pseudogenes for this gene on chromosomes 1, 6, 7, 8, 9, and 13.

Recommended Dilution

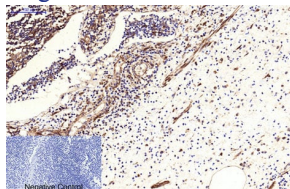
IF: 1:200

IHC: 1:50-1:200

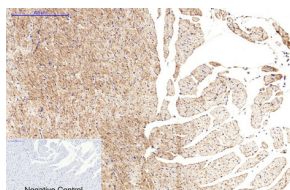
WB: 1:1000-1:3000

Not yet tested in other applications.

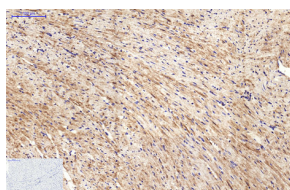
Images



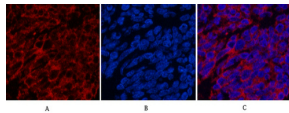
Immunohistochemical analysis of paraffin-embedded Human-Tonsil tissue. 1.Beta-tubulin (HRP Conjugated) Monoclonal antibody(5G3) was diluted at 1:200(4°C,overnight). 2.Sodium citrate pH 6.0 was used for antibody retrieval(>98°C,20min). 3.Secondary antibody was diluted at 1:200(room temperature, 30min). Negative control was used by secondary antibody only.



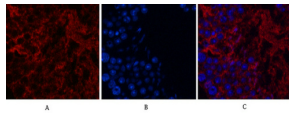
Immunohistochemical analysis of paraffin-embedded Rat-heart tissue. 1.Beta-tubulin (HRP Conjugated) Monoclonal antibody(5G3) was diluted at 1:200(4°C,overnight). 2.Sodium citrate pH 6.0 was used for antibody retrieval(>98°C,20min). 3.Secondary antibody was diluted at 1:200(room temperature, 30min). Negative control was used by secondary antibody only.



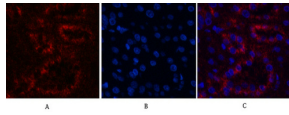
Immunohistochemical analysis of paraffin-embedded Mouse-heart tissue. 1.Beta-tubulin (HRP Conjugated) Monoclonal antibody(5G3) was diluted at 1:200(4°C,overnight). 2.Sodium citrate pH 6.0 was used for antibody retrieval(>98°C,20min). 3.Secondary antibody was diluted at 1:200(room temperature, 30min). Negative control was used by secondary antibody only.



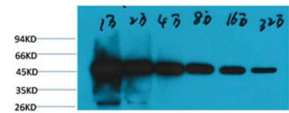
Immunofluorescence analysis of Human-lung-cancer tissue. 1.Beta-tubulin (HRP Conjugated) Monoclonal antibody(5G3)(red) was diluted at 1:200(4°C,overnight). 2. Cy3 labeled Secondary antibody was diluted at 1:300(room temperature, 50min).3. Picture B: DAPI(blue) 10min. Picture A:Target. Picture B: DAPI. Picture C: merge of A+B



Immunofluorescence analysis of Mouse-testis tissue. 1.Beta-tubulin (HRP Conjugated) Monoclonal antibody(5G3)(red) was diluted at 1:200(4°C,overnight). 2. Cy3 labeled Secondary antibody was diluted at 1:300(room temperature, 50min).3. Picture B: DAPI(blue) 10min. Picture A:Target. Picture B: DAPI. Picture C: merge of A+B



Immunofluorescence analysis of Rat-kidney tissue. 1.Beta-tubulin (HRP Conjugated) Monoclonal antibody(5G3)(red) was diluted at 1:200(4°C,overnight). 2. Cy3 labeled Secondary antibody was diluted at 1:300(room temperature, 50min).3. Picture B: DAPI(blue) 10min. Picture A:Target. Picture B: DAPI. Picture C: merge of A+B



Western blot analysis of Hela, with Beta-tubulin-HRP Conjugated diluted at 1:10,000, 20,000, 40,000, 80,000, 160,000, 320,000.

Storage

-20°C for one year

501 Changsheng S Rd, Nanhu Dist, Jiaxing, Zhejiang, China

Tel: 86 21 31007137 | E-mail: save@bt-laboratory.com | www.bt-laboratory.com