

## Beta-tubulin Monoclonal Antibody(M7)

### Description

<b>Product type</b>	Primary Antibody
<b>Code</b>	BT-MCA1357
<b>Host</b>	Mouse
<b>Isotype</b>	IgG
<b>Size</b>	20ul, 50ul, 100ul
<b>Immunogen</b>	Synthetic Peptide of Beta-tubulin
<b>Mol wt</b>	50433
<b>Species reactivity</b>	Human,Mouse,Rat
<b>Clonality</b>	Monoclonal
<b>Recommended application</b>	WB, IF, ICC
<b>Concentration</b>	1 mg/ml
<b>Full name</b>	Tubulin beta-3 chain
<b>Synonyms</b>	TUBB3; TUBB4; Tubulin beta-3 chain; Tubulin beta-4 chain; Tubulin beta-III

This product is for research use only, not for use in human, therapeutic or diagnostic procedure.

### Background

This gene encodes a class III member of the beta tubulin protein family. Beta tubulins are one of two core protein families (alpha and beta tubulins) that heterodimerize and assemble to form microtubules. This protein is primarily expressed in neurons and may be involved in neurogenesis and axon guidance and maintenance. Mutations in this gene are the cause of congenital fibrosis of the extraocular muscles type 3. Alternate splicing results in multiple transcript variants. A pseudogene of this gene is found on chromosome 6.

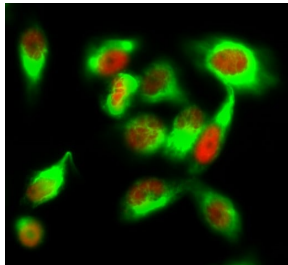
### Recommended Dilution

IF: 1:100-200

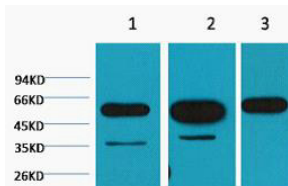
WB: 1:5000 -10000

Not yet tested in other applications.

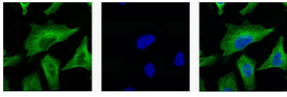
### Images



Immunofluorescence analysis of HeLa cell. ERK 1/2 (phospho Tyr222/205) Polyclonal Antibody(red) was diluted at 1:200(4°C overnight). Beta-tubulin Monoclonal antibody(M7)(green) was diluted at 1:200(4°C overnight).



Western blot analysis of 1) HeLa, 2) Mouse Brain tissue, 3) Rat Brain tissue diluted at 1:5000.



IF analysis of HeLa with antibody (Left) and DAPI (Right) diluted at 1:100.

### Storage

-20°C for one year

501 Changsheng S Rd, Nanhu Dist, Jiaxing, Zhejiang, China

Tel: 86 21 31007137 | E-mail: [save@bt-laboratory.com](mailto:save@bt-laboratory.com) | [www.bt-laboratory.com](http://www.bt-laboratory.com)