

MYL2 Monoclonal Antibody

Description

Product type	Antibody
Code	BT-MCA2083
Host	Mouse
Isotype	Mouse IgG1
Size	100μL, 50μL
Immunogen	Purified recombinant fragment of MYL2 expressed in E. Coli.
Mol wt	19kDa
Species reactivity	Human
Clonality	Monoclonal
Recommended application	WB
Concentration	N/A
Full name	N/A
Synonyms	MLC2;CMH10;DKFZp779C0562

This product is for research use only, not for use in human, therapeutic or diagnostic procedure.

Background

MYL2(myosin, light chain 2, regulatory, cardiac, slow), also known as MLC-2, MLC2v. Entrez protein NP_000423. MYL2 associated with cardiac myosin beta (or slow) heavy chain. Ca⁺ triggers the phosphorylation of regulatory light chain that in turn triggers contraction. It is an hexamer of two heavy chains and four light chains that is predominantly expressed in adult cardiac ventricle muscle. Mutations in MYL2 are associated with mid-left ventricular chamber type hypertrophic cardiomyopathy.

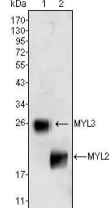
Recommended Dilution

WB: 1:500 - 1:2000

ELISA: 1:10000

Not yet tested in other applications.

Images



Western blot analysis using MYL3 (1) and MYL2 (2) mouse mAb against rat fetal heart tissue lysate.

Storage

Store at 4°C short term. Aliquot and store at -20°C long term.