

CD18 Monoclonal Antibody

Description

Product type	Antibody
Code	BT-MCA2108
Host	Mouse
Isotype	Mouse IgG2b
Size	100 μ L, 50 μ L
Immunogen	Purified recombinant fragment of CD18 expressed in E. Coli.
Mol wt	85kDa
Species reactivity	Human, Mouse
Clonality	Monoclonal
Recommended application	ICC
Concentration	N/A
Full name	N/A
Synonyms	LAD; MF17; LCAMB; LFA-1; ITGB2

This product is for research use only, not for use in human, therapeutic or diagnostic procedure.

Background

CD18, also known as ITGB2 (integrin beta chain beta 2). Integrins are integral cell-surface proteins composed of an alpha chain and a beta chain. A given chain may combine with multiple partners resulting in different integrins. For example, beta 2 combines with the alpha L chain to form the integrin LFA-1, and combines with the alpha M chain to form the integrin Mac-1. Integrins are known to participate in cell adhesion as well as cell-surface mediated signalling. CD18 is expressed by most leucocytes. Defects in this gene are the cause of leukocyte adhesion deficiency type I (LAD1). Two transcript variants encoding the same protein have been identified for this gene.

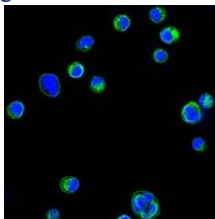
Recommended Dilution

ICC: 1:200 - 1:1000

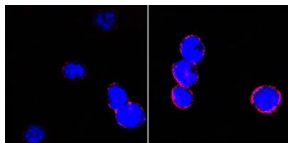
ELISA: 1:10000

Not yet tested in other applications.

Images



Confocal Immunofluorescence analysis of HL60 cells using CD18 mouse mAb (green). Blue: DRAQ5 fluorescent DNA dye.



Confocal Immunofluorescence analysis of BCBL-1 cells (left) and L1210 cells (right) using CD18 mouse mAb (red). Blue: DRAQ5 fluorescent DNA dye.

Storage

Store at 4°C short term. Aliquot and store at -20°C long term.

