

## IL1B Monoclonal Antibody

### Description

|                                |   |
|--------------------------------|---|
| <b>Product type</b>            | Antibody  |
| <b>Code</b>                    | BT-MCA2113  |
| <b>Host</b>                    | Mouse   |
| <b>Isotype</b>                 | Mouse IgG1  |
| <b>Size</b>                    | 100µL, 50µL   |
| <b>Immunogen</b>               | Purified recombinant fragment of human IL1B expressed in E. Coli. |
| <b>Mol wt</b>                  | 31kDa   |
| <b>Species reactivity</b>      | Human   |
| <b>Clonality</b>               | Monoclonal  |
| <b>Recommended application</b> | IHC,ICC   |
| <b>Concentration</b>           | N/A   |
| <b>Full name</b>               | N/A   |
| <b>Synonyms</b>                | IL-1;IL1F2;IL1-BETA   |

This product is for research use only, not for use in human, therapeutic or diagnostic procedure.

### Background

The modification of proteins with ubiquitin is an important cellular mechanism for targeting abnormal or short-lived proteins for degradation. Ubiquitination involves at least three classes of enzymes: ubiquitin-activating enzymes, or E1s, ubiquitin-conjugating enzymes, or E2s, and ubiquitin-protein ligases, or E3s. This gene encodes a member of the E2 ubiquitin-conjugating enzyme family. Four alternatively spliced transcript variants encoding the same protein have been found for this gene.

### Recommended Dilution

WB: 1:500 - 1:2000

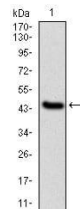
IHC-p: 1:200 - 1:1000

ICC: 1:200 - 1:1000

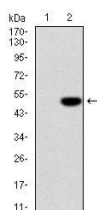
ELISA: 1:10000

Not yet tested in other applications.

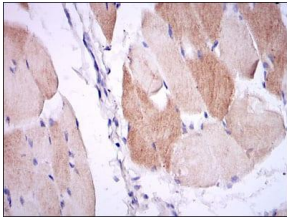
### Images



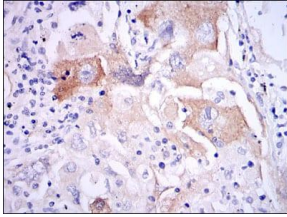
Western blot analysis using IL1B mAb against human IL1B (AA: 126-261) recombinant protein.  
(Expected MW is 41 kDa)



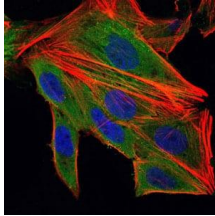
Western blot analysis using IL1B mAb against HEK293 (1) and IL1B-hlgGf transfected HEK293 (2) cell lysate.



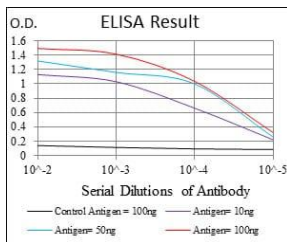
Immunohistochemical analysis of paraffin-embedded muscle tissues using IL1B mouse mAb with DAB staining.



Immunohistochemical analysis of paraffin-embedded lung cancer tissues using IL1B mouse mAb with DAB staining.



Immunofluorescence analysis of HepG2 cells using IL1B mouse mAb (green). Blue: DRAQ5 fluorescent DNA dye. Red: Actin filaments have been labeled with Alexa Fluor-555 phalloidin.



Black line: Control Antigen (100 ng); Purple line: Antigen(10ng); Blue line: Antigen (50 ng); Red line: Antigen (100 ng);

### Storage

Store at 4°C short term. Aliquot and store at -20°C long term.

501 Changsheng S Rd, Nanhu Dist, Jiaxing, Zhejiang, China

Tel: 86 21 31007137 | E-mail: [save@bt-laboratory.com](mailto:save@bt-laboratory.com) | [www.bt-laboratory.com](http://www.bt-laboratory.com)