

## MAP2K4 Monoclonal Antibody

### Description

<b>Product type</b>	Antibody
<b>Code</b>	BT-MCA2146
<b>Host</b>	Mouse
<b>Isotype</b>	Mouse IgG1
<b>Size</b>	100µL, 50µL
<b>Immunogen</b>	Purified recombinant fragment of human MAP2K4 expressed in E. Coli.
<b>Mol wt</b>	42kDa
<b>Species reactivity</b>	Human
<b>Clonality</b>	Monoclonal
<b>Recommended application</b>	WB,IHC,FCM
<b>Concentration</b>	N/A
<b>Full name</b>	N/A
<b>Synonyms</b>	JNKK;MEK4;MKK4;SEK1;JNKK1;SERK1;MAPKK4;PRKMK4;MAP2K4

**This product is for research use only, not for use in human, therapeutic or diagnostic procedure.**

### Background

This gene encodes a dual specificity protein kinase that belongs to the Ser/Thr protein kinase family. This kinase is a direct activator of MAP kinases in response to various environmental stresses or mitogenic stimuli. It has been shown to activate MAPK8/JNK1, MAPK9/JNK2, and MAPK14/p38, but not MAPK1/ERK2 or MAPK3/ERK3. This kinase is phosphorylated, and thus activated by MAP3K1/MEKK. The knockout studies in mice suggested the roles of this kinase in mediating survival signal in T cell development, as well as in the organogenesis of liver. Tissue specificity: Abundant expression is seen in the skeletal muscle. It is also widely expressed in other tissues .

### Recommended Dilution

WB: 1:500 - 1:2000

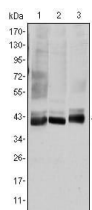
IHC-p: 1:200 - 1:1000

FCM: 1:200 - 1:400

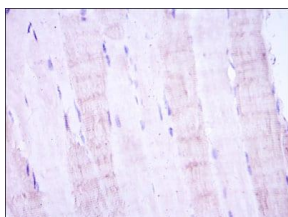
ELISA: 1:10000

Not yet tested in other applications.

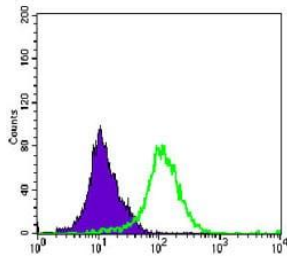
### Images



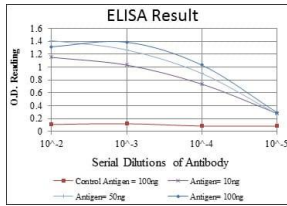
Western blot analysis using MAP2K4 mouse mAb against HepG2 (1), K562 (2), and HEK293 (3) cell lysate.



Immunohistochemical analysis of paraffin-embedded muscle tissues using MAP2K4 mouse mAb with DAB staining.



Flow cytometric analysis of K562 cells using MAP2K4 mouse mAb (green) and negative control (purple).



Red: Control Antigen (100ng); Purple: Antigen (10ng); Green: Antigen (50ng); Blue: Antigen (100ng);

### Storage

Store at 4°C short term. Aliquot and store at -20°C long term.

501 Changsheng S Rd, Nanhu Dist, Jiaxing, Zhejiang, China

Tel: 86 21 31007137 | E-mail: [save@bt-laboratory.com](mailto:save@bt-laboratory.com) | [www.bt-laboratory.com](http://www.bt-laboratory.com)