

CD20 Monoclonal Antibody

Description

Product type	Antibody
Code	BT-MCA2184
Host	Mouse
Isotype	Mouse IgG
Size	100µL, 50µL
Immunogen	Synthetic peptide corresponding to aa (EPANPSEKNSPSTQY) of human CD20, conjugated to KLH.
Mol wt	N/A
Species reactivity	Human
Clonality	Monoclonal
Recommended application	IHC, ICC
Concentration	N/A
Full name	N/A
Synonyms	B1;S7;Bp35;CD20;MS4A2;LEU-16;MGC3969;MS4A1

This product is for research use only, not for use in human, therapeutic or diagnostic procedure.

Background

CD20 (MS4A1, membrane-spanning 4-domains, subfamily A, member 1) is a member of the membrane-spanning 4A gene family. Members of this nascent protein family are characterized by common structural features and similar intron/exon splice boundaries and display unique expression patterns among hematopoietic cells and nonlymphoid tissues. The CD20 antigen is present on human pre B lymphocytes and on B lymphocytes at all stages of maturation, except on plasma cells. Low level expression of the CD20 antigen has been detected on normal T lymphocytes. The CD20 molecule is involved in regulation of B cell differentiation, presumably via its reported function as a Ca⁺⁺ channel subunit. And it is known to accelerate the G0 to G1 progression induced by IGF-1.

Recommended Dilution

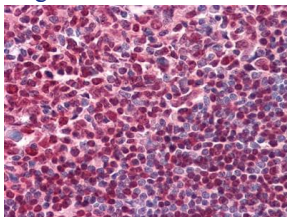
IHC-p: 1:200 - 1:1000

ICC: 1:200 - 1:1000

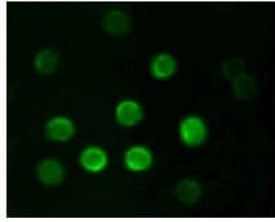
ELISA: 1:10000

Not yet tested in other applications.

Images



Immunohistochemical analysis of paraffin-embedded human Tonsil tissues using CD20 mouse mAb.



Immunofluorescence analysis of B lymphocytes using CD20 mouse mAb.

Storage

Store at 4°C short term. Aliquot and store at -20°C long term.

501 Changsheng S Rd, Nanhu Dist, Jiaxing, Zhejiang, China

Tel: 86 21 31007137 | E-mail: save@bt-laboratory.com | www.bt-laboratory.com