

MCM2 Monoclonal Antibody

Description

Product type	Antibody
Code	BT-MCA2202
Host	Mouse
Isotype	Mouse IgG1
Size	100µL, 50µL
Immunogen	Purified recombinant fragment of human MCM2 expressed in E. Coli.
Mol wt	125kDa
Species reactivity	Human
Clonality	Monoclonal
Recommended application	WB,IHC,ICC,FCM
Concentration	N/A
Full name	N/A
Synonyms	BM28;CCNL1;CDCL1;cdc19;D3S3194;MITOTIN;KIAA0030;MGC10606

This product is for research use only, not for use in human, therapeutic or diagnostic procedure.

Background

The protein encoded by this gene is one of the highly conserved mini-chromosome maintenance proteins (MCM) that are involved in the initiation of eukaryotic genome replication. The hexameric protein complex formed by MCM proteins is a key component of the pre-replication complex (pre-RC) and may be involved in the formation of replication forks and in the recruitment of other DNA replication related proteins. This protein forms a complex with MCM4, 6, and 7, and has been shown to regulate the helicase activity of the complex. This protein is phosphorylated, and thus regulated by, protein kinases CDC2 and CDC7.

Recommended Dilution

WB: 1:500 - 1:2000

IHC-p: 1:200 - 1:1000

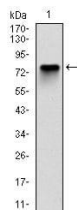
ICC: 1:200 - 1:1000

FCM: 1:200 - 1:400

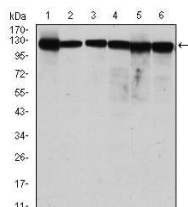
ELISA: 1:10000

Not yet tested in other applications.

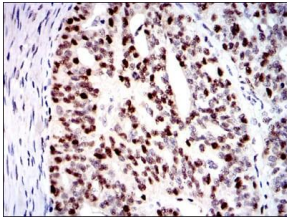
Images



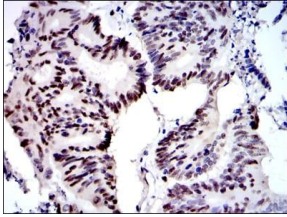
Western blot analysis using MCM2 mAb against human MCM2 (AA: 16-232) recombinant protein.
(Expected MW is 50.4 kDa)



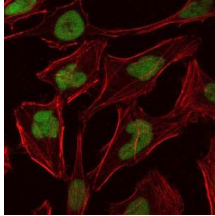
Western blot analysis using MCM2 mouse mAb against MCF-7 (1), HeLa (2), Jurkat (3), K562 (4), HEK293 (5) and HEPG2 (6) cell lysate.



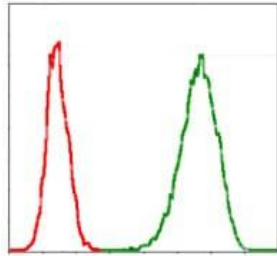
Immunohistochemical analysis of paraffin-embedded ovarian cancer tissues using MCM2 mouse mAb with DAB staining.



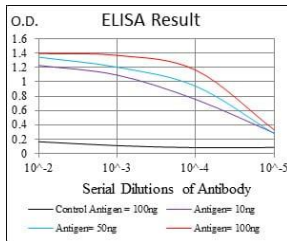
Immunohistochemical analysis of paraffin-embedded colon cancer tissues using MCM2 mouse mAb with DAB staining.



Immunofluorescence analysis of HeLa cells using MCM2 mouse mAb (green). Blue: DRAQ5 fluorescent DNA dye. Red: Actin filaments have been labeled with Alexa Fluor-555 phalloidin.



Flow cytometric analysis of Jurkat cells using MCM2 mouse mAb (green) and negative control (red).



Black line: Control Antigen (100 ng); Purple line: Antigen(10ng); Blue line: Antigen (50 ng); Red line: Antigen (100 ng);

Storage

Store at 4°C short term. Aliquot and store at -20°C long term.

501 Changsheng S Rd, Nanhu Dist, Jiaxing, Zhejiang, China

Tel: 86 21 31007137 | E-mail: save@bt-laboratory.com | www.bt-laboratory.com