

## TUBA8 Monoclonal Antibody

### Description

<b>Product type</b>	Antibody
<b>Code</b>	BT-MCA2211
<b>Host</b>	Mouse
<b>Isotype</b>	Mouse IgG2b
<b>Size</b>	100µL, 50µL
<b>Immunogen</b>	Purified recombinant fragment of human TUBA8 expressed in E. Coli.
<b>Mol wt</b>	50kDa
<b>Species reactivity</b>	Human,Rat
<b>Clonality</b>	Monoclonal
<b>Recommended application</b>	WB,IHC,ICC,FCM
<b>Concentration</b>	N/A
<b>Full name</b>	N/A
<b>Synonyms</b>	TUBAL2

This product is for research use only, not for use in human, therapeutic or diagnostic procedure.

### Background

This gene encodes a member of the alpha tubulin protein family. Alpha tubulins are one of two core protein families (alpha and beta tubulins) that heterodimerize and assemble to form microtubules. Mutations in this gene are associated with polymicrogyria and optic nerve hypoplasia. Alternate splicing results in multiple transcript variants.

### Recommended Dilution

WB: 1:500 - 1:2000

IHC-p: 1:200 - 1:1000

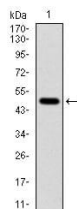
ICC: 1:200 - 1:1000

FCM: 1:200 - 1:400

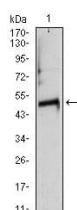
ELISA: 1:10000

Not yet tested in other applications.

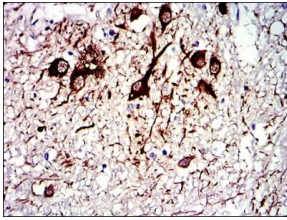
### Images



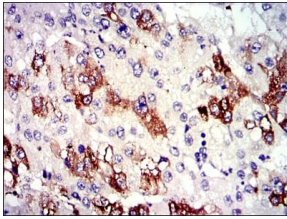
Western blot analysis using TUBA8 mAb against human TUBA8 (AA: 294-449) recombinant protein. (Expected MW is 50 kDa)



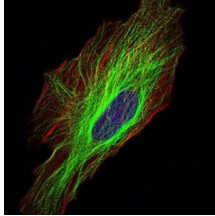
Western blot analysis using TUBA8 mouse mAb against rat heart (1) tissue lysate.



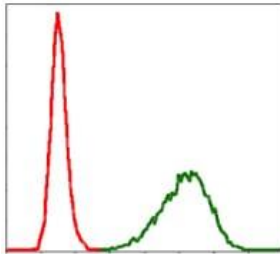
Immunohistochemical analysis of paraffin-embedded medulla oblongata tissues using TUBA8 mouse mAb with DAB staining.



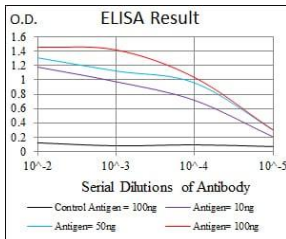
Immunohistochemical analysis of paraffin-embedded liver cancer tissues using TUBA8 mouse mAb with DAB staining.



Immunofluorescence analysis of HeLa cells using TUBA8 mouse mAb (green). Blue: DRAQ5 fluorescent DNA dye. Red: Actin filaments have been labeled with Alexa Fluor-555 phalloidin.



Flow cytometric analysis of NIH/3T3 cells using TUBA8 mouse mAb (green) and negative control (red).



Black line: Control Antigen (100 ng); Purple line: Antigen(10ng); Blue line: Antigen (50 ng); Red line: Antigen (100 ng);

## Storage

Store at 4°C short term. Aliquot and store at -20°C long term.

501 Changsheng S Rd, Nanhu Dist, Jiaxing, Zhejiang, China

Tel: 86 21 31007137 | E-mail: [save@bt-laboratory.com](mailto:save@bt-laboratory.com) | [www.bt-laboratory.com](http://www.bt-laboratory.com)