

SOD1 Monoclonal Antibody

Description

Product type	Antibody
Code	BT-MCA2229
Host	Mouse
Isotype	Mouse IgG1
Size	100µL, 50µL
Immunogen	Purified recombinant fragment of human SOD1 expressed in E. Coli.
Mol wt	18kDa
Species reactivity	Human,Mouse
Clonality	Monoclonal
Recommended application	WB,ICC,FCM
Concentration	N/A
Full name	N/A
Synonyms	ALS;SOD;ALS1;IPOA;homodimer

This product is for research use only, not for use in human, therapeutic or diagnostic procedure.

Background

SOD1 (superoxide dismutase 1, soluble), also known as ALS. The protein binds copper and zinc ions and is one of two isozymes responsible for destroying free superoxide radicals in the body. The encoded isozyme is a soluble cytoplasmic protein, acting as a homodimer to convert naturally-occurring but harmful superoxide radicals to molecular oxygen and hydrogen peroxide. The other isozyme is a mitochondrial protein. Mutations in this gene have been implicated as causes of familial amyotrophic lateral sclerosis (ALS), a progressive degenerative disease of motor neurons. Rare transcript variants have been reported for this gene.

Recommended Dilution

WB: 1:500 - 1:2000

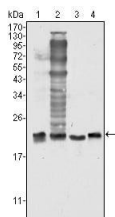
ICC: 1:200 - 1:1000

FCM: 1:200 - 1:400

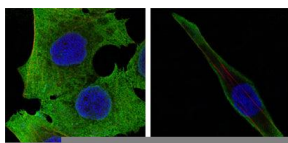
ELISA: 1:10000

Not yet tested in other applications.

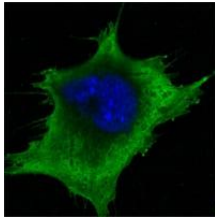
Images



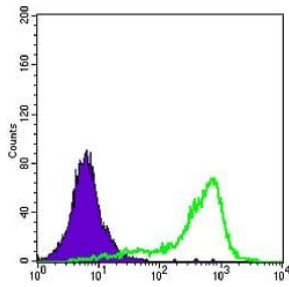
Western blot analysis using SOD1 mouse mAb against Hela (1), NIH/3T3 (2), A549 (3) and A431 (4) cell lysate.



Confocal Immunofluorescence analysis of PANC-1 (left) and SKBR-3 (right) cells using SOD1 mouse mAb (green). Red: Actin filaments have been labeled with DY-554 phalloidin. Blue: DRAQ5 fluorescent DNA dye.



Confocal Immunofluorescence analysis of 3T3-L1 cells using SOD1 mouse mAb (green). Blue: DRAQ5 fluorescent DNA dye.



Flow cytometric analysis of A431 cells using SOD1 mouse mAb (green) and negative control (purple).

Storage

Store at 4°C short term. Aliquot and store at -20°C long term.

501 Changsheng S Rd, Nanhu Dist, Jiaxing, Zhejiang, China

Tel: 86 21 31007137 | E-mail: save@bt-laboratory.com | www.bt-laboratory.com