

BMI1 Monoclonal Antibody

Description

Product type	Antibody
Code	BT-MCA2235
Host	Mouse
Isotype	Mouse IgG1
Size	100µL, 50µL
Immunogen	Purified recombinant fragment of human BMI1 expressed in E. Coli.
Mol wt	37kDa
Species reactivity	Human
Clonality	Monoclonal
Recommended application	IHC,ICC,FCM
Concentration	N/A
Full name	N/A
Synonyms	PCGF4;RNF51;MGC12685;FLV12/BMI1

This product is for research use only, not for use in human, therapeutic or diagnostic procedure.

Background

Component of the Polycomb group (PcG) multiprotein PRC1 complex, a complex required to maintain the transcriptionally repressive state of many genes, including Hox genes, throughout development. PcG PRC1 complex acts via chromatin remodeling and modification of histones; it mediates monoubiquitination of histone H2A 'Lys-119', rendering chromatin heritably changed in its expressibility. In the PRC1 complex, it is required to stimulate the E3 ubiquitin-protein ligase activity of RNF2/RING2.

Recommended Dilution

WB: 1:500 - 1:2000

IHC-p: 1:200 - 1:1000

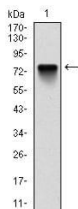
ICC: 1:200 - 1:1000

FCM: 1:200 - 1:400

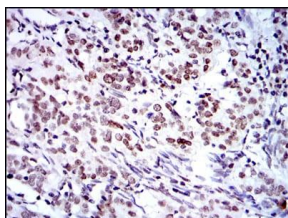
ELISA: 1:10000

Not yet tested in other applications.

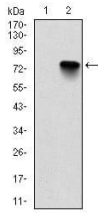
Images



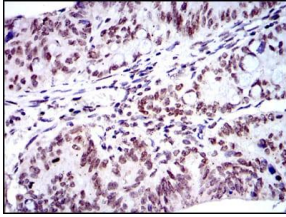
Western blot analysis using BMI1 mAb against human BMI1 (AA: 1-326) recombinant protein.
(Expected MW is 74 kDa)



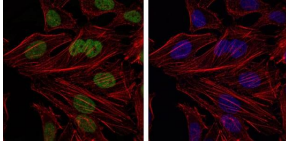
Immunohistochemical analysis of paraffin-embedded cervical cancer tissues using BMI1 mouse mAb with DAB staining.



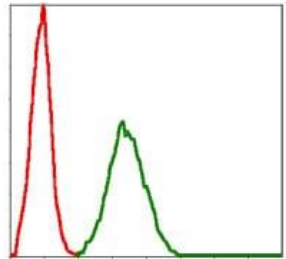
Western blot analysis using BMI1 mAb against HEK293 (1) and BMI1-hIgGFc transfected HEK293 (2) cell lysate.



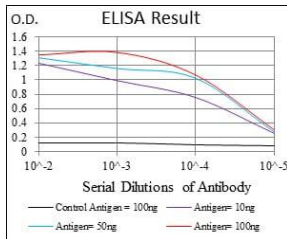
Immunohistochemical analysis of paraffin-embedded rectum cancer tissues using BMI1 mouse mAb with DAB staining.



Immunofluorescence analysis of HeLa cells using BMI1 mouse mAb (green). Blue: DRAQ5 fluorescent DNA dye. Red: Actin filaments have been labeled with Alexa Fluor-555 phalloidin.



Flow cytometric analysis of NIH/3T3 cells using BMI1 mouse mAb (green) and negative control (red).



Black line: Control Antigen (100 ng); Purple line: Antigen(10ng); Blue line: Antigen (50 ng); Red line: Antigen (100 ng);

Storage

Store at 4°C short term. Aliquot and store at -20°C long term.

501 Changsheng S Rd, Nanhu Dist, Jiaxing, Zhejiang, China

Tel: 86 21 31007137 | E-mail: save@bt-laboratory.com | www.bt-laboratory.com