

CIB1 Monoclonal Antibody

Description

Product type	Antibody
Code	BT-MCA2247
Host	Mouse
Isotype	Mouse IgG1
Size	100µL, 50µL
Immunogen	Purified recombinant fragment of CIB1 expressed in E. Coli.
Mol wt	N/A
Species reactivity	Human
Clonality	Monoclonal
Recommended application	WB,IHC
Concentration	N/A
Full name	N/A
Synonyms	CIB;KIP;KIP1;SIP2-28

This product is for research use only, not for use in human, therapeutic or diagnostic procedure.

Background

CIB1 (also designated calcium and integrin binding 1 or calmyrin), with 191-amino acid protein (about 21kDa), belongs to the calcium-binding protein family. CIB1 is known to interact with DNA-dependent protein kinase and may play a role in kinase-phosphatase regulation of DNA end joining. CIB1 is an EF-hand-containing protein that binds multiple effector proteins, including the platelet alpha(IIB)beta(3) integrin and several serine/threonine kinases and potentially modulates their function. CIB1 regulates platelet aggregation in hemostasis through a specific interaction with the alpha(IIB) cytoplasmic domain of platelet integrin alpha(IIB)beta(3). CIB1 is also ubiquitously expressed activating and inhibiting protein ligand of the InsP3R.

Recommended Dilution

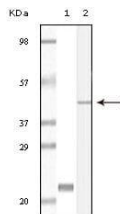
WB: 1:500 - 1:2000

IHC-p: 1:200 - 1:1000

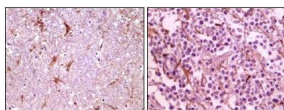
ELISA: 1:10000

Not yet tested in other applications.

Images



Western blot analysis using CIB1 mouse mAb against truncated CIB1 recombinant protein (1) and A431 cell lysate (2).



Immunohistochemical analysis of paraffin-embedded human thalamus (left) and glioma (right) tissue, showing membrane localization using CIB1 mouse mAb with DAB staining.

Storage

Store at 4°C short term. Aliquot and store at -20°C long term.

501 Changsheng S Rd, Nanhu Dist, Jiaxing, Zhejiang, China
Tel: 86 21 31007137 | E-mail: save@bt-laboratory.com | www.bt-laboratory.com