

## RSK1 Monoclonal Antibody

### Description

<b>Product type</b>	Antibody
<b>Code</b>	BT-MCA2270
<b>Host</b>	Mouse
<b>Isotype</b>	Mouse IgG2b
<b>Size</b>	100µL, 50µL
<b>Immunogen</b>	Purified recombinant fragment of human RSK1 expressed in E. Coli.
<b>Mol wt</b>	N/A
<b>Species reactivity</b>	Human
<b>Clonality</b>	Monoclonal
<b>Recommended application</b>	IHC
<b>Concentration</b>	N/A
<b>Full name</b>	N/A
<b>Synonyms</b>	RSK;HU-1;RSK1;MAPKAPK1A;RPS6KA1

**This product is for research use only, not for use in human, therapeutic or diagnostic procedure.**

### Background

Rsk1 is a member of a family of 90kDa ribosomal protein S6 kinases, which includes Rsk1, Rsk2 and Rsk3. These are broadly expressed serine / threonine protein kinases activated in response to mitogenic stimuli, including extracellular signal regulated protein kinases Erk1 and Erk2. Rsk1 is activated by MAPK in vitro and in vivo via phosphorylation. Active Rsk1s appear to play a major role in transcriptional regulation by translocating to the nucleus and phosphorylating c-Fos and CREB. RSK proteins possess two separate kinase domains, the C terminal kinase domain and the N terminal kinase domain, separated by a linker region containing a hydrophobic motif. RSK is activated by many stimuli including growth factors, phorbol esters, cAMP, heat shock, and irradiation.

### Recommended Dilution

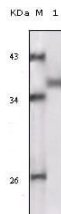
WB: 1:500 - 1:2000

IHC-p: 1:200 - 1:1000

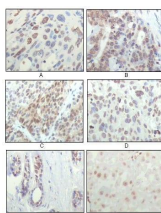
ELISA: 1:10000

Not yet tested in other applications.

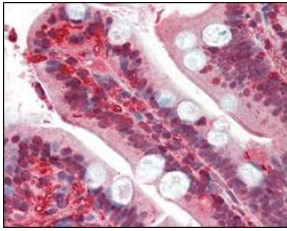
### Images



Western blot analysis using RSK1 mouse mAb against truncated RSK1 recombinant protein.



Immunohistochemical analysis of paraffin-embedded human esophageal squamous cell carcinoma (A), colon adenocarcinoma (B), liver carcinoma (C), skin carcinoma (D), breast ductal tumor (E) and brain tumor (F), showing nuclear localization using RSK1 mouse mAb with DAB staining.



Immunohistochemical analysis of paraffin-embedded human small intestine tissues using RSK1 mouse mAb.

### Storage

Store at 4°C short term. Aliquot and store at -20°C long term.

501 Changsheng S Rd, Nanhu Dist, Jiaxing, Zhejiang, China

Tel: 86 21 31007137 | E-mail: [save@bt-laboratory.com](mailto:save@bt-laboratory.com) | [www.bt-laboratory.com](http://www.bt-laboratory.com)