

NEDD8 Monoclonal Antibody

Description

Product type	Antibody
Code	BT-MCA2330
Host	Mouse
Isotype	Mouse IgG1
Size	100µL, 50µL
Immunogen	Purified recombinant fragment of human NEDD8 expressed in E. Coli.
Mol wt	9kDa
Species reactivity	Human
Clonality	Monoclonal
Recommended application	WB,IHC,ICC,FCM
Concentration	N/A
Full name	N/A
Synonyms	NEDD-8

This product is for research use only, not for use in human, therapeutic or diagnostic procedure.

Background

Ubiquitin-like protein which plays an important role in cell cycle control and embryogenesis. Covalent attachment to its substrates requires prior activation by the E1 complex UBE1C-APPBP1 and linkage to the E2 enzyme UBE2M. Attachment of NEDD8 to cullins activates their associated E3 ubiquitin ligase activity, and thus promotes polyubiquitination and proteasomal degradation of cyclins and other regulatory proteins. Tissue specificity: Highly expressed in heart, skeletal muscle, spleen, thymus, prostate, testis, ovary, colon and leukocytes.

Recommended Dilution

WB: 1:500 - 1:2000

IHC-p: 1:200 - 1:1000

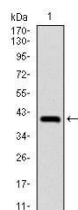
ICC: 1:200 - 1:1000

FCM: 1:200 - 1:400

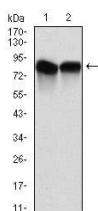
ELISA: 1:10000

Not yet tested in other applications.

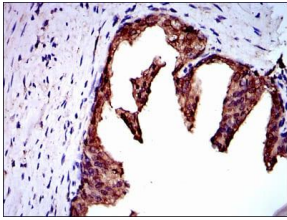
Images



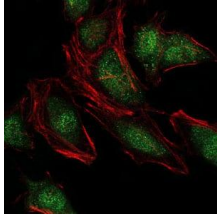
Western blot analysis using NEDD8 mAb against human NEDD8 (AA: 1-81) recombinant protein.
(Expected MW is 40 kDa)



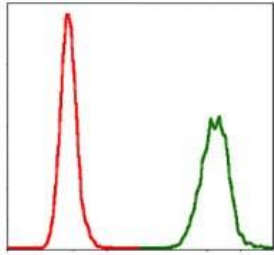
Western blot analysis using NEDD8 mouse mAb against C6 (1) and HeLa (2) cell lysate.



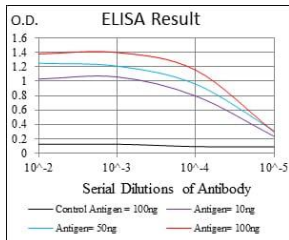
Immunohistochemical analysis of paraffin-embedded prostate cancer tissues using NEDD8 mouse mAb with DAB staining.



Immunofluorescence analysis of HeLa cells using NEDD8 mouse mAb (green). Red: Actin filaments have been labeled with Alexa Fluor-555 phalloidin.



Flow cytometric analysis of HeLa cells using NEDD8 mouse mAb (green) and negative control (red).



Black line: Control Antigen (100 ng); Purple line: Antigen(10ng); Blue line: Antigen (50 ng); Red line: Antigen (100 ng);

Storage

Store at 4°C short term. Aliquot and store at -20°C long term.

501 Changsheng S Rd, Nanhu Dist, Jiaxing, Zhejiang, China

Tel: 86 21 31007137 | E-mail: save@bt-laboratory.com | www.bt-laboratory.com