

mouse Splunc2 Monoclonal Antibody

Description

Product type	Antibody
Code	BT-MCA2395
Host	Mouse
Isotype	Mouse IgG1
Size	100µL, 50µL
Immunogen	Purified recombinant fragment of mouse Splunc2 expressed in E. Coli.
Mol wt	N/A
Species reactivity	Human
Clonality	Monoclonal
Recommended application	IHC,ICC,FCM
Concentration	N/A
Full name	N/A
Synonyms	N/A

This product is for research use only, not for use in human, therapeutic or diagnostic procedure.

Background

N/A

Recommended Dilution

WB: 1:500 - 1:2000

IHC-p: 1:200 - 1:1000

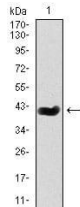
ICC: 1:200 - 1:1000

FCM: 1:200 - 1:400

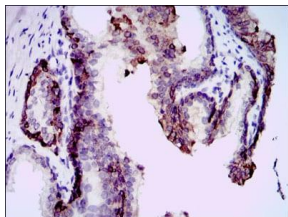
ELISA: 1:10000

Not yet tested in other applications.

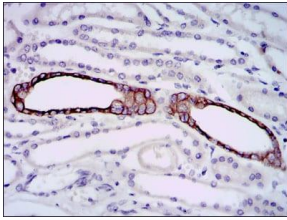
Images



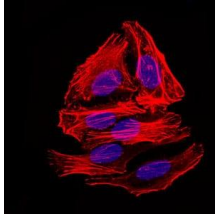
Western blot analysis using mouse Splunc2 mAb against mouse Splunc2 (AA: 16-169) recombinant protein. (Expected MW is 41.6 kDa)



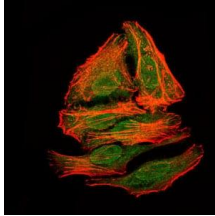
Immunohistochemical analysis of paraffin-embedded prostate tissues using mouse Splunc2 mouse mAb with DAB staining.



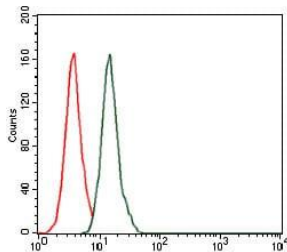
Immunohistochemical analysis of paraffin-embedded kidney tissues using mouse Splunc2 mouse mAb with DAB staining.



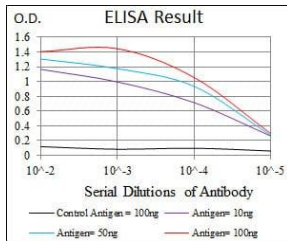
Immunofluorescence analysis of HepG2 cells. Blue: DRAQ5 fluorescent DNA dye. Red: Actin filaments have been labeled with Alexa Fluor-555 phalloidin.



Immunofluorescence analysis of HepG2 cells using mouse Splunc2 mouse mAb (green). Red: Actin filaments have been labeled with Alexa Fluor-555 phalloidin.



Flow cytometric analysis of HeLa cells using mouse Splunc2 mouse mAb (green) and negative control (red).



Black line: Control Antigen (100 ng); Purple line: Antigen(10ng); Blue line: Antigen (50 ng); Red line: Antigen (100 ng);

Storage

Store at 4°C short term. Aliquot and store at -20°C long term.

501 Changsheng S Rd, Nanhu Dist, Jiaxing, Zhejiang, China

Tel: 86 21 31007137 | E-mail: save@bt-laboratory.com | www.bt-laboratory.com