

IL2RA Monoclonal Antibody

Description

Product type	Antibody
Code	BT-MCA2422
Host	Mouse
Isotype	Mouse IgG1
Size	100µL, 50µL
Immunogen	Purified recombinant fragment of human IL2RA (AA: 34-139) expressed in E. Coli.
Mol wt	30.8kDa
Species reactivity	Human,Mouse,Monkey,Rat
Clonality	Monoclonal
Recommended application	WB,IHC,ICC
Concentration	N/A
Full name	N/A
Synonyms	CD25;IL2R;TCGFR;IDDM10

This product is for research use only, not for use in human, therapeutic or diagnostic procedure.

Background

N/A

Recommended Dilution

WB: 1:500 - 1:2000

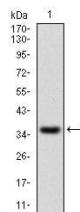
IHC-p: 1:200 - 1:1000

ICC: 1:200 - 1:1000

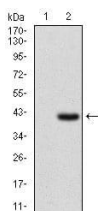
ELISA: 1:10000

Not yet tested in other applications.

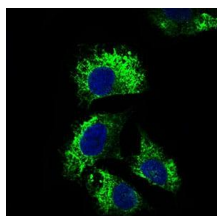
Images



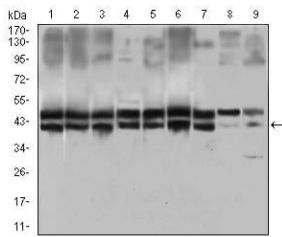
Western blot analysis using IL2RA mAb against human IL2RA recombinant protein. (Expected MW is 37.5 kDa)



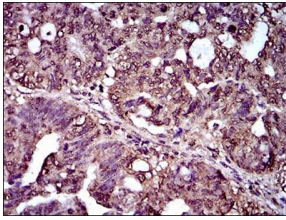
Western blot analysis using IL2RA mAb against HEK293 (1) and IL2RA (AA: 34-139)-hIgGFc transfected HEK293 (2) cell lysate.



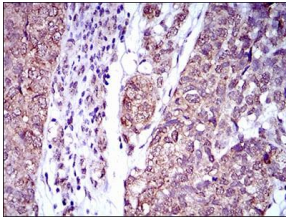
Immunofluorescence analysis of HeLa cells using IL2RA mouse mAb (green). Blue: DRAQ5 fluorescent DNA dye.



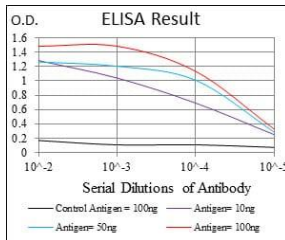
Western blot analysis using IL2RA mouse mAb against HeLa (1), MOLT4 (2), HEK293 (3), A549 (4), Jurkat (5), K562 (6), Cos7 (7), PC-12 (8) and NIH/3T3 (9) cell lysate.



Immunohistochemical analysis of paraffin-embedded rectum cancer tissues using IL2RA mouse mAb with DAB staining.



Immunohistochemical analysis of paraffin-embedded bladder cancer tissues using IL2RA mouse mAb with DAB staining.



Black line: Control Antigen (100 ng); Purple line: Antigen(10ng); Blue line: Antigen (50 ng); Red line: Antigen (100 ng);

Storage

Store at 4°C short term. Aliquot and store at -20°C long term.

501 Changsheng S Rd, Nanhu Dist, Jiaxing, Zhejiang, China

Tel: 86 21 31007137 | E-mail: save@bt-laboratory.com | www.bt-laboratory.com