

MSH2 Monoclonal Antibody

Description

Product type	Antibody
Code	BT-MCA2443
Host	Mouse
Isotype	Mouse IgG1
Size	100µL, 50µL
Immunogen	Purified recombinant fragment of human MSH2 expressed in E. Coli.
Mol wt	105kDa
Species reactivity	Human,Monkey
Clonality	Monoclonal
Recommended application	WB,IHC,ICC
Concentration	N/A
Full name	N/A
Synonyms	FCC1;COCA1;HNPCC;LCFS2

This product is for research use only, not for use in human, therapeutic or diagnostic procedure.

Background

N/A

Recommended Dilution

WB: 1:500 - 1:2000

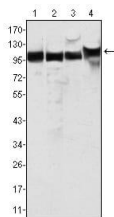
IHC-p: 1:200 - 1:1000

ICC: 1:200 - 1:1000

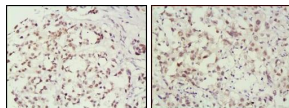
ELISA: 1:10000

Not yet tested in other applications.

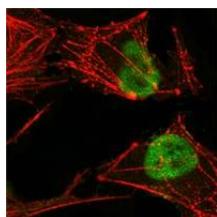
Images



Western blot analysis using MSH2 mouse mAb against HeLa (1), A549 (2), A431 (3) and HEK293 (4) cell lysate.



Immunohistochemical analysis of paraffin-embedded human breast cancer (left) and lung cancer (right) tissues, showing nuclear localization using MSH2 mouse mAb with DAB staining.



Confocal Immunofluorescence analysis of HeLa cells using MSH2 mouse mAb (green), showing nuclear localization. Red: Actin filaments have been labeled with Alexa Fluor-555 phalloidin.

Storage

Store at 4°C short term. Aliquot and store at -20°C long term.

501 Changsheng S Rd, Nanhu Dist, Jiaxing, Zhejiang, China

Tel: 86 21 31007137 | E-mail: save@bt-laboratory.com | www.bt-laboratory.com