

## ABL2 Monoclonal Antibody

### Description

<b>Product type</b>	Antibody
<b>Code</b>	BT-MCA2478
<b>Host</b>	Mouse
<b>Isotype</b>	Mouse IgG1
<b>Size</b>	100µL, 50µL
<b>Immunogen</b>	Purified recombinant fragment of ABL2 expressed in E. Coli.
<b>Mol wt</b>	N/A
<b>Species reactivity</b>	Human
<b>Clonality</b>	Monoclonal
<b>Recommended application</b>	ICC
<b>Concentration</b>	N/A
<b>Full name</b>	N/A
<b>Synonyms</b>	ARG;ABLL;FLJ22224;FLJ31718;FLJ41441

This product is for research use only, not for use in human, therapeutic or diagnostic procedure.

### Background

ABL2(ARG, Abelson-related gene) is a cytoplasmic tyrosine kinase which is closely related to but distinct from ABL1. The similarity of the proteins includes the tyrosine kinase domains and extends amino-terminal to include the SH2 and SH3 domains. ABL2 is expressed in both normal and tumor cells. The ABL2 gene product is expressed as two variants bearing different amino termini, both approximately 12-kb in length. c-Abl shows both cytoplasmic and nuclear localization,c-Abl is involved in two different chromosomal translocations present in human leukemias, which generate Bcr-Abl and TEL-Abl.

### Recommended Dilution

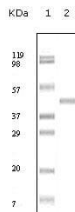
WB: 1:500 - 1:2000

ICC: 1:200 - 1:1000

ELISA: 1:10000

Not yet tested in other applications.

### Images



Western blot analysis using ABL2 mouse mAb against truncated ABL2 recombinant protein.



Immunofluorescence staining of methanol-fixed HeLa cells using ABL2 mouse mAb showing cytoplasm localization.

### Storage

Store at 4°C short term. Aliquot and store at -20°C long term.

501 Changsheng S Rd, Nanhu Dist, Jiaxing, Zhejiang, China

Tel: 86 21 31007137 | E-mail: [save@bt-laboratory.com](mailto:save@bt-laboratory.com) | [www.bt-laboratory.com](http://www.bt-laboratory.com)