

HK1 Monoclonal Antibody

Description

Product type	Antibody
Code	BT-MCA2485
Host	Mouse
Isotype	Mouse IgG1
Size	100µL, 50µL
Immunogen	Purified recombinant fragment of human HK1 expressed in E. Coli.
Mol wt	102kDa
Species reactivity	Human,Mouse,Rat
Clonality	Monoclonal
Recommended application	WB,IHC,ICC,FCM
Concentration	N/A
Full name	N/A
Synonyms	HK1;HXK1;HK1-ta;HK1-tb;HK1-tc;HK1

This product is for research use only, not for use in human, therapeutic or diagnostic procedure.

Background

The hexokinases utilize Mg-ATP as a phosphoryl donor to catalyze the first step of intracellular glucose metabolism, the conversion of glucose to glucose- 6-phosphate. Four hexokinase isoenzymes have been identified, including hexokinase I (HXK I), hexokinase II (HXK II), hexokinase III (HXK III) and hexokinase IV (HXK IV, also designated glucokinase or GCK). Hexokinases I-III each contain an N-terminal cluster of hydrophobic amino acids. Glucokinase lacks the N-terminal hydrophobic cluster. The hydrophobic cluster is thought to be necessary for membrane binding. This is substantiated by the finding that glucokinase has lower affinity for glucose than do the other hexokinases. HK I has been shown to be expressed in brain, kidney and heart tissues as well as in hepatoma cell lines.

Recommended Dilution

WB: 1:500 - 1:2000

IHC-p: 1:200 - 1:1000

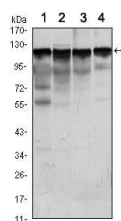
ICC: 1:200 - 1:1000

FCM: 1:200 - 1:400

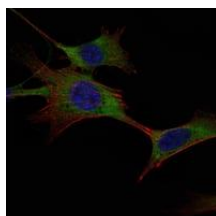
ELISA: 1:10000

Not yet tested in other applications.

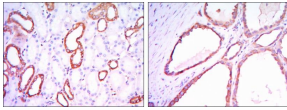
Images



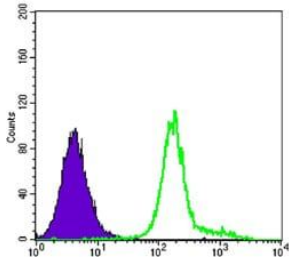
Western blot analysis using HK1 mouse mAb against Jurkat (1), HeLa (2), HepG2 (3) and NIH/3T3 (4) cell lysate.



Immunofluorescence analysis of NIH/3T3 cells using HK1 mouse mAb (green). Blue: DRAQ5 fluorescent DNA dye. Red: Actin filaments have been labeled with Alexa Fluor-555 phalloidin.



Immunohistochemical analysis of paraffin-embedded kidney tissues using HK1 mouse mAb with DAB staining.



Flow cytometric analysis of K562 cells using HK1 mouse mAb (green) and negative control (purple).

Storage

Store at 4°C short term. Aliquot and store at -20°C long term.

501 Changsheng S Rd, Nanhu Dist, Jiaxing, Zhejiang, China

Tel: 86 21 31007137 | E-mail: save@bt-laboratory.com | www.bt-laboratory.com