

BCL-2 Monoclonal Antibody

Description

Product type	Antibody
Code	BT-MCA2520
Host	Mouse
Isotype	Mouse IgG1
Size	100µL, 50µL
Immunogen	Synthetic peptide corresponding to residues surrounding BCL-2, conjugated to KLH.
Mol wt	26kDa
Species reactivity	Human,Mouse
Clonality	Monoclonal
Recommended application	IHC,ICC,FCM
Concentration	N/A
Full name	N/A
Synonyms	Bcl-2;BCL2

This product is for research use only, not for use in human, therapeutic or diagnostic procedure.

Background

This gene encodes an integral outer mitochondrial membrane protein that blocks the apoptotic death of some cells such as lymphocytes. Constitutive expression of BCL2, such as in the case of translocation of BCL2 to Ig heavy chain locus, is thought to be the cause of follicular lymphoma. Tissue specificity: Expressed in a variety of tissues.

Recommended Dilution

IHC-p: 1:200 - 1:1000

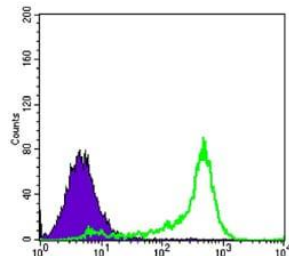
ICC: 1:200 - 1:1000

FCM: 1:200 - 1:400

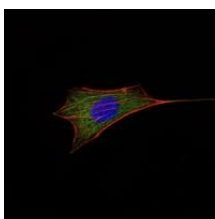
ELISA: 1:10000

Not yet tested in other applications.

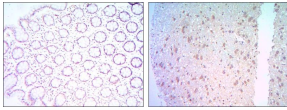
Images



Flow cytometric analysis of 3T3L1 cells using BCL-2 mouse mAb (green) and negative control (purple).



Immunofluorescence analysis of NIH/3T3 cells using BCL-2 mouse mAb (green). Blue: DRAQ5 fluorescent DNA dye. Red: Actin filaments have been labeled with Alexa Fluor-555 phalloidin.



Immunohistochemical analysis of paraffin-embedded colon cancer tissues (left) and human brain tissues (right) using BCL-2 mouse mAb with DAB staining.

Storage

Store at 4°C short term. Aliquot and store at -20°C long term.

501 Changsheng S Rd, Nanhu Dist, Jiaxing, Zhejiang, China

Tel: 86 21 31007137 | E-mail: save@bt-laboratory.com | www.bt-laboratory.com