

ATP2C1 Monoclonal Antibody

Description

Product type	Antibody
Code	BT-MCA2532
Host	Mouse
Isotype	Mouse IgG1
Size	100µL, 50µL
Immunogen	Purified recombinant fragment of ATP2C1 expressed in E. Coli.
Mol wt	100kDa
Species reactivity	Human,Monkey
Clonality	Monoclonal
Recommended application	WB,IHC
Concentration	N/A
Full name	N/A
Synonyms	HHD;BCPM;PMR1;SPCA1

This product is for research use only, not for use in human, therapeutic or diagnostic procedure.

Background

ATP2C1, also known as PMR1, it belongs to the family of P-type cation transport ATPases. This magnesium-dependent enzyme catalyzes the hydrolysis of ATP coupled with the transport of the calcium. The human homologue, ATP2C1 (also designated SPLA in rat), also regulates the transport of calcium in the Golgi complex and is related to other P-type ATPases family members, such as the sarco(endo)plasmic calcium ATPase (SERCA) and the plasma membrane calcium ATPase (PCMA). ATP2C1 is a transmembrane protein that exists as two splice variants, which vary by 20 amino acids. Defects in ATP2C1 cause Hailey-Hailey disease, which is an autosomal dominant disorder that is characterized by blisters and erosions of the skin. These findings provide further evidence that PMR1 plays a key role in maintaining the integrity of the epidermis by controlling intracellular calcium signaling.

Recommended Dilution

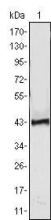
WB: 1:500 - 1:2000

IHC-p: 1:200 - 1:1000

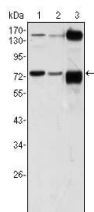
ELISA: 1:10000

Not yet tested in other applications.

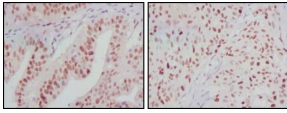
Images



Western blot analysis using ATP2C1 mAb against human ATP2C1 (AA: 119-269) recombinant protein. (Expected MW is 41.7 kDa)



Western blot analysis using ATP2C1 mouse mAb against A431 (1), HeLa (2) and HEK293 (3) cell lysate.



Immunohistochemical analysis of paraffin-embedded human ovarian cancer (left) and breast cancer (right) tissues using ATP2C1 mouse mAb with DAB staining.

Storage

Store at 4°C short term. Aliquot and store at -20°C long term.

501 Changsheng S Rd, Nanhu Dist, Jiaxing, Zhejiang, China

Tel: 86 21 31007137 | E-mail: save@bt-laboratory.com | www.bt-laboratory.com