

## SMARCA2 Monoclonal Antibody

### Description

|                         |  |
|-------------------------|--|
| Product type            | Antibody   |
| Code                    | BT-MCA2566   |
| Host                    | Mouse  |
| Isotype                 | Mouse IgG1   |
| Size                    | 100 $\mu$ L, 50 $\mu$ L  |
| Immunogen               | N/A  |
| Mol wt                  | 181.3kDa   |
| Species reactivity      | Human  |
| Clonality               | Monoclonal   |
| Recommended application | WB,IHC,ICC,FCM   |
| Concentration           | N/A  |
| Full name               | N/A  |
| Synonyms                | BIS;BRM;SNF2;SWI2;hBRM;NCBRS;Sth1p;BAF190;SNF2L2;SNF2LA;hSNF2a |

This product is for research use only, not for use in human, therapeutic or diagnostic procedure.

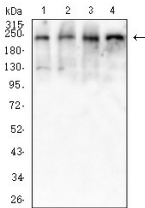
### Background

The protein encoded by this gene is a member of the SWI/SNF family of proteins and is highly similar to the brahma protein of *Drosophila*. Members of this family have helicase and ATPase activities and are thought to regulate transcription of certain genes by altering the chromatin structure around those genes. The encoded protein is part of the large ATP-dependent chromatin remodeling complex SNF/SWI, which is required for transcriptional activation of genes normally repressed by chromatin. Alternatively spliced transcript variants encoding different isoforms have been found for this gene, which contains a trinucleotide repeat (CAG) length polymorphism. [provided by RefSeq, Jan 2014]

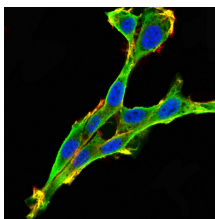
### Recommended Dilution

Not yet tested in other applications.

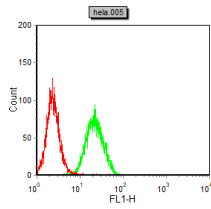
### Images



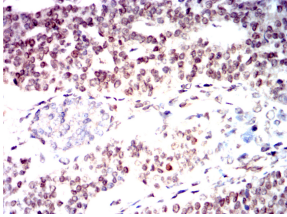
Western blot analysis using SMARCA2 mouse mAb against HeLa(1),HEK293(2),HepG2(3),A431(4)cell lysate.



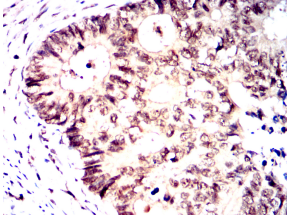
Confocal Immunofluorescence analysis of NIH3T3 cells using SMARCA2 mouse mAb (green). Red: Actin filaments have been labeled with Alexa Fluor-555 phalloidin. Blue: DRAQ5 fluorescent DNA dye.



Flow cytometric analysis of HeLa cells using SMARCA2 mouse mAb (green) and negative control (red).



Immunohistochemical analysis of paraffin-embedded human ovarian cancer tissues using SMARCA2 mouse mAb with DAB staining.



Immunohistochemical analysis of paraffin-embedded human rectal cancer tissues using SMARCA2 mouse mAb with DAB staining.

### Storage

Store at 4°C short term. Aliquot and store at -20°C long term.

501 Changsheng S Rd, Nanhu Dist, Jiaxing, Zhejiang, China

Tel: 86 21 31007137 | E-mail: [save@bt-laboratory.com](mailto:save@bt-laboratory.com) | [www.bt-laboratory.com](http://www.bt-laboratory.com)