

KITLG Monoclonal Antibody

Description

Product type	Antibody
Code	BT-MCA2664
Host	Mouse
Isotype	Mouse IgG2b
Size	100µL, 50µL
Immunogen	Purified recombinant fragment of human KITLG (AA: Extra(26-214)) expressed in Mammalian
Mol wt	30.9kDa
Species reactivity	Others
Clonality	Monoclonal
Recommended application	FCM
Concentration	N/A
Full name	N/A
Synonyms	SF;MGF;SCF;SLF;DCUA;FPH2;FPHH;KL-1;Kitl;SHEP7;DFNA69

This product is for research use only, not for use in human, therapeutic or diagnostic procedure.

Background

This gene encodes the ligand of the tyrosine-kinase receptor encoded by the KIT locus. This ligand is a pleiotropic factor that acts in utero in germ cell and neural cell development, and hematopoiesis, all believed to reflect a role in cell migration. In adults, it functions pleiotropically, while mostly noted for its continued requirement in hematopoiesis. Two transcript variants encoding different isoforms have been found for this gene.

Recommended Dilution

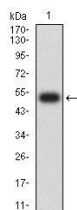
WB: 1:500 - 1:2000

FCM: 1:200 - 1:400

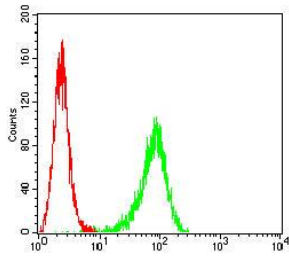
ELISA: 1:10000

Not yet tested in other applications.

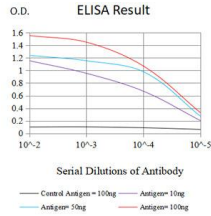
Images



Western blot analysis using KITLG mAb against human KITLG (AA: Extra(26-214)) recombinant protein. (Expected MW is 52 kDa)



Flow cytometric analysis of HeLa cells using KITLG mouse mAb (green) and negative control (red).



Black line: Control Antigen (100 ng);Purple line: Antigen (10ng); Blue line: Antigen (50 ng); Red line:Antigen (100 ng)

Storage

Store at 4°C short term. Aliquot and store at -20°C long term.

501 Changsheng S Rd, Nanhu Dist, Jiaxing, Zhejiang, China

Tel: 86 21 31007137 | E-mail: save@bt-laboratory.com | www.bt-laboratory.com