

MSI1 Monoclonal Antibody

Description

Product type	Antibody
Code	BT-MCA2667
Host	Mouse
Isotype	Mouse IgG1
Size	100µL, 50µL
Immunogen	Purified recombinant fragment of human MSI1 expressed in E. Coli.
Mol wt	39kDa
Species reactivity	Human
Clonality	Monoclonal
Recommended application	WB,FCM
Concentration	N/A
Full name	N/A
Synonyms	MSI1

This product is for research use only, not for use in human, therapeutic or diagnostic procedure.

Background

This gene encodes a protein containing two conserved tandem RNA recognition motifs. Similar proteins in other species function as RNA-binding proteins and play central roles in posttranscriptional gene regulation. Expression of this gene has been correlated with the grade of the malignancy and proliferative activity in gliomas and melanomas. Musashi-1 is frequently used as a marker for proliferating neural precursor cells, it is also expressed in epithelial stem cells including intestinal and mammary gland stem cells. Tissue specificity: Detected in fetal kidney, brain, liver and lung, and in adult brain and pancreas. Detected in hepatoma cell lines.

Recommended Dilution

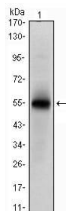
WB: 1:500 - 1:2000

FCM: 1:200 - 1:400

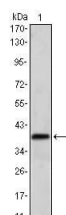
ELISA: 1:10000

Not yet tested in other applications.

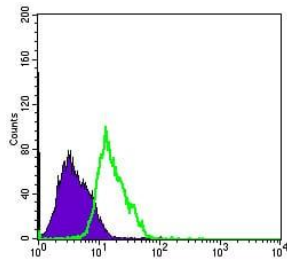
Images



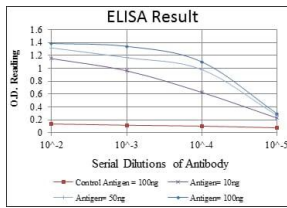
Western blot analysis using MSI1 mAb against human MSI1 (AA: 1-203) recombinant protein.
(Expected MW is 48.5 kDa)



Western blot analysis using MSI1 mouse mAb against NTERA-2 cell lysate.



Flow cytometric analysis of PC-2 cells using MSI1 mouse mAb (green) and negative control (purple).



Red: Control Antigen (100ng); Purple: Antigen (10ng); Green: Antigen (50ng); Blue: Antigen (100ng);

Storage

Store at 4°C short term. Aliquot and store at -20°C long term.

501 Changsheng S Rd, Nanhu Dist, Jiaxing, Zhejiang, China

Tel: 86 21 31007137 | E-mail: save@bt-laboratory.com | www.bt-laboratory.com