

PSA (KLK3) Monoclonal Antibody

Description

Product type	Antibody
Code	BT-MCA2721
Host	Mouse
Isotype	Mouse IgG1
Size	100µL, 50µL
Immunogen	Purified recombinant fragment of KLK3 (aa26-251) expressed in E. Coli.
Mol wt	N/A
Species reactivity	Human
Clonality	Monoclonal
Recommended application	IHC,FCM
Concentration	N/A
Full name	N/A
Synonyms	APS;PSA;hK3;KLK2A1;KLK3

This product is for research use only, not for use in human, therapeutic or diagnostic procedure.

Background

Kallikrein-related peptidase 3. Kallikreins are a subgroup of serine proteases having diverse physiological functions. Growing evidence suggests that many kallikreins are implicated in carcinogenesis and some have potential as novel cancer and other disease biomarkers. This gene is one of the fifteen kallikrein subfamily members located in a cluster on chromosome 19. Its protein product is a protease present in seminal plasma. It is thought to function normally in the liquefaction of seminal coagulum, presumably by hydrolysis of the high molecular mass seminal vesicle protein. Serum level of this protein, called PSA in the clinical setting, is useful in the diagnosis and monitoring of prostatic carcinoma. Alternate splicing of this gene generates several transcript variants encoding different isoforms.

Recommended Dilution

WB: 1:500 - 1:2000

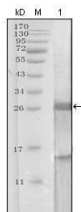
IHC-p: 1:200 - 1:1000

FCM: 1:200 - 1:400

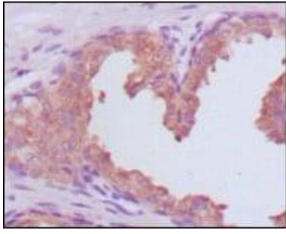
ELISA: 1:10000

Not yet tested in other applications.

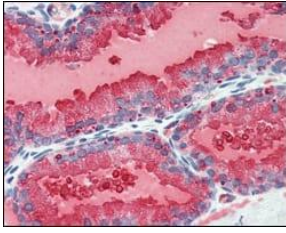
Images



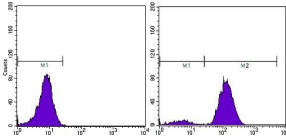
Western blot analysis using KLK3 mouse mAb against truncated KLK3 recombinant protein.



Immunohistochemical analysis of paraffin-embedded human prostate carcinoma tissues, showing cytoplasmic localization using KLK3 mouse mAb with DAB staining.



Immunohistochemical analysis of paraffin-embedded human prostate tissues using KLK3 mouse mAb with DAB staining.



Flow cytometric analysis of PC-3 cells using KLK3 mouse mAb (right) and negative control (left).

Storage

Store at 4°C short term. Aliquot and store at -20°C long term.

501 Changsheng S Rd, Nanhu Dist, Jiaxing, Zhejiang, China

Tel: 86 21 31007137 | E-mail: save@bt-laboratory.com | www.bt-laboratory.com