

ERK2 Monoclonal Antibody

Description

Product type	Antibody
Code	BT-MCA2736
Host	Mouse
Isotype	Mouse IgG2a
Size	100µL, 50µL
Immunogen	Purified recombinant fragment of human ERK2 expressed in E. Coli.
Mol wt	41kDa
Species reactivity	Human,Mouse,Monkey
Clonality	Monoclonal
Recommended application	WB,IHC,ICC
Concentration	N/A
Full name	N/A
Synonyms	ERK;p38;p40;p41;ERT1;MAPK2;PRKM1;P42MAPK;p41mapk;MAPK1

This product is for research use only, not for use in human, therapeutic or diagnostic procedure.

Background

ERK2 (also designated extracellular-signal-related kinase 2 or mitogen-activated protein kinase 1), with 360-amino acid protein (about 40kDa), belongs to the MAP kinase family. MAP kinases act as an integration point for multiple biochemical signals, and are involved in a wide variety of cellular processes such as proliferation, differentiation, transcription regulation and development. The activation of ERK2 requires its phosphorylation by upstream kinases. ERK2 is located in the cytoplasm of resting cells and translocates into the nucleus upon extracellular stimuli by active transport of a dimer. ERK2 is essential for placental development and ERK2 in the trophoblast compartment may be indispensable for the vascularization of the labyrinth.

Recommended Dilution

WB: 1:500 - 1:2000

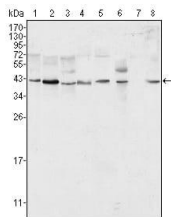
IHC-p: 1:200 - 1:1000

ICC: 1:200 - 1:1000

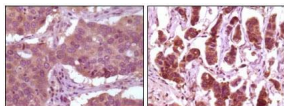
ELISA: 1:10000

Not yet tested in other applications.

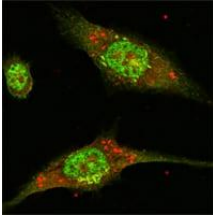
Images



Western blot analysis using ERK2 mouse mAb against HeLa (1), NIH/3T3 (2), MCF-7 (3), HEK293 (4), Jurkat (5), A549 (6), NTERA-2 (7) and SMMC-7721 (8) cell lysate.



Immunohistochemical analysis of paraffin-embedded human lung carcinoma (left) and breast carcinoma (right) showing cytoplasmic localization using ERK2 mouse mAb with DAB staining.



Confocal Immunofluorescence analysis of Eca-109 cells using ERK2 mouse mAb (green).

Storage

Store at 4°C short term. Aliquot and store at -20°C long term.

501 Changsheng S Rd, Nanhu Dist, Jiaxing, Zhejiang, China

Tel: 86 21 31007137 | E-mail: save@bt-laboratory.com | www.bt-laboratory.com