

CK5 Monoclonal Antibody

Description

Product type	Antibody
Code	BT-MCA2762
Host	Mouse
Isotype	Mouse IgG1
Size	100µL, 50µL
Immunogen	Purified recombinant fragment of human CK5 expressed in E. Coli.
Mol wt	62.3kDa
Species reactivity	Human,Mouse,Monkey
Clonality	Monoclonal
Recommended application	WB,IHC,ICC,FCM
Concentration	N/A
Full name	N/A
Synonyms	KRT5;K5;DDD;EBS2;KRT5A

This product is for research use only, not for use in human, therapeutic or diagnostic procedure.

Background

The protein encoded by this gene is a member of the keratin gene family. The type II cytokeratins consist of basic or neutral proteins which are arranged in pairs of heterotypic keratin chains coexpressed during differentiation of simple and stratified epithelial tissues. This type II cytokeratin is specifically expressed in the basal layer of the epidermis with family member KRT14. Mutations in these genes have been associated with a complex of diseases termed epidermolysis bullosa simplex. The type II cytokeratins are clustered in a region of chromosome 12q12-q13.

Recommended Dilution

WB: 1:500 - 1:2000

IHC-p: 1:200 - 1:1000

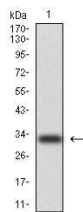
ICC: 1:200 - 1:1000

FCM: 1:200 - 1:400

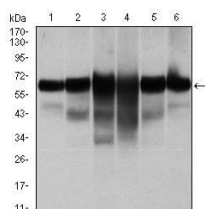
ELISA: 1:10000

Not yet tested in other applications.

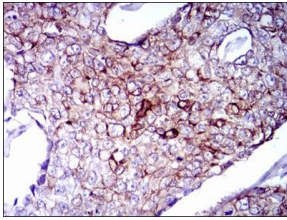
Images



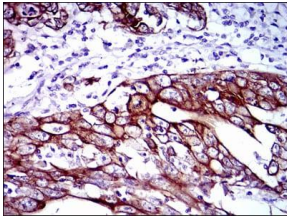
Western blot analysis using CK5 mAb against human CK5 (AA: 158-272) recombinant protein.
(Expected MW is 33.3 kDa)



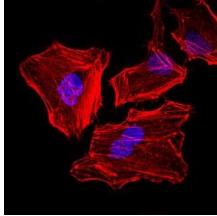
Western blot analysis using CK5 mouse mAb against A431 (1), MCF-7 (2), HeLa (3), HepG2 (4), 3T3-L1 (5), and COS-7 (6) cell lysate.



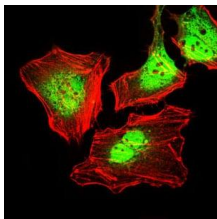
Immunohistochemical analysis of paraffin-embedded breast cancer tissues using CK5 mouse mAb with DAB staining.



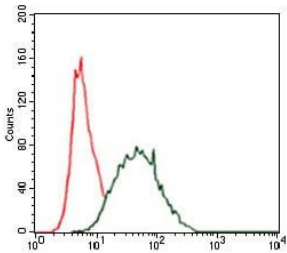
Immunohistochemical analysis of paraffin-embedded stomach cancer tissues using CK5 mouse mAb with DAB staining.



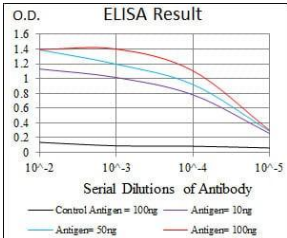
Immunofluorescence analysis of HeLa cells. Blue: DRAQ5 fluorescent DNA dye. Red: Actin filaments have been labeled with Alexa Fluor-555 phalloidin.



Immunofluorescence analysis of HeLa cells using CK5 mouse mAb (green). Red: Actin filaments have been labeled with Alexa Fluor-555 phalloidin.



Flow cytometric analysis of HeLa cells using CK5 mouse mAb (green) and negative control (red).



Black line: Control Antigen (100 ng); Purple line: Antigen(10ng); Blue line: Antigen (50 ng); Red line: Antigen (100 ng);

Storage

Store at 4°C short term. Aliquot and store at -20°C long term.

501 Changsheng S Rd, Nanhu Dist, Jiaxing, Zhejiang, China

Tel: 86 21 31007137 | E-mail: save@bt-laboratory.com | www.bt-laboratory.com