

## SDHA Monoclonal Antibody

### Description

<b>Product type</b>	Antibody
<b>Code</b>	BT-MCA2795
<b>Host</b>	Mouse
<b>Isotype</b>	Mouse IgG2a
<b>Size</b>	100µL, 50µL
<b>Immunogen</b>	Purified recombinant fragment of human SDHA (AA: 516-665) expressed in E. Coli.
<b>Mol wt</b>	72.7KDa
<b>Species reactivity</b>	Human,Mouse
<b>Clonality</b>	Monoclonal
<b>Recommended application</b>	WB,ICC,FCM
<b>Concentration</b>	N/A
<b>Full name</b>	N/A
<b>Synonyms</b>	FP;PGL5;SDH1;SDH2;SDHF;CMD1GG;MC2DN1;NDAXOA

This product is for research use only, not for use in human, therapeutic or diagnostic procedure.

### Background

This gene encodes a major catalytic subunit of succinate-ubiquinone oxidoreductase, a complex of the mitochondrial respiratory chain. The complex is composed of four nuclear-encoded subunits and is localized in the mitochondrial inner membrane. Mutations in this gene have been associated with a form of mitochondrial respiratory chain deficiency known as Leigh Syndrome. A pseudogene has been identified on chromosome 3q29. Alternatively spliced transcript variants encoding different isoforms have been found for this gene.

### Recommended Dilution

WB: 1:500 - 1:2000

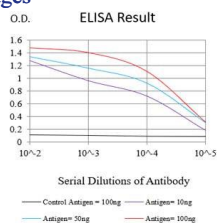
ICC: 1:200 - 1:1000

FCM: 1:200 - 1:400

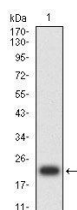
ELISA: 1:10000

Not yet tested in other applications.

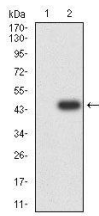
### Images



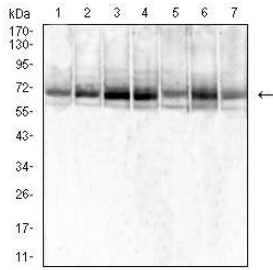
Black line: Control Antigen (100 ng);Purple line: Antigen (10ng); Blue line: Antigen (50 ng); Red line:Antigen (100 ng)



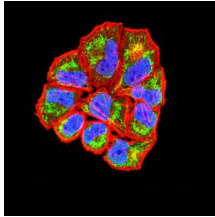
Western blot analysis using SDHA mAb against human SDHA (AA: 516-665) recombinant protein. (Expected MW is 20 kDa)



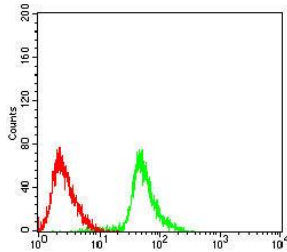
Western blot analysis using SDHA mAb against HEK293-6e (1) and SDHA (AA: 516-665)-hlgGFc transfected HEK293-6e (2) cell lysate.



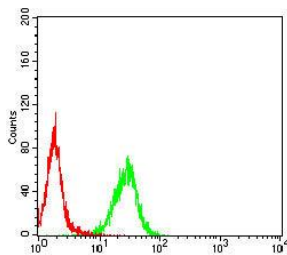
Western blot analysis using SDHA mouse mAb against Jurkat (1), MCF-7 (2), HeLa (3), HepG2 (4), PC-3 (5), .HL-60 (6),and NIH/3T3 (7) cell lysate.



Immunofluorescence analysis of HeLa cells using SDHA mouse mAb (green). Blue: DRAQ5 fluorescent DNA dye. Red: Actin filaments have been labeled with Alexa Fluor- 555 phalloidin. Secondary antibody from Fisher (Cat#: 35503)



Flow cytometric analysis of Raji cells using SDHA mouse mAb (green) and negative control (red).



Flow cytometric analysis of THP-1 cells using SDHA mouse mAb (green) and negative control (red).

## Storage

Store at 4°C short term. Aliquot and store at -20°C long term.

501 Changsheng S Rd, Nanhu Dist, Jiaxing, Zhejiang, China

Tel: 86 21 31007137 | E-mail: [save@bt-laboratory.com](mailto:save@bt-laboratory.com) | [www.bt-laboratory.com](http://www.bt-laboratory.com)