

## CHRNE Monoclonal Antibody

### Description

<b>Product type</b>	Antibody
<b>Code</b>	BT-MCA2913
<b>Host</b>	Mouse
<b>Isotype</b>	Mouse IgG1
<b>Size</b>	100µL, 50µL
<b>Immunogen</b>	Purified recombinant fragment of human CHRNE (AA: extra 21-239) expressed in E. Coli.
<b>Mol wt</b>	54.7kDa
<b>Species reactivity</b>	Human,Rat
<b>Clonality</b>	Monoclonal
<b>Recommended application</b>	WB
<b>Concentration</b>	N/A
<b>Full name</b>	N/A
<b>Synonyms</b>	ACHRE;CMS1D;CMS1E;CMS2A;CMS4A;CMS4B;CMS4C;FCCMS;SCCMS

This product is for research use only, not for use in human, therapeutic or diagnostic procedure.

### Background

Acetylcholine receptors at mature mammalian neuromuscular junctions are pentameric protein complexes composed of four subunits in the ratio of two alpha subunits to one beta, one epsilon, and one delta subunit. The acetylcholine receptor changes subunit composition shortly after birth when the epsilon subunit replaces the gamma subunit seen in embryonic receptors. Mutations in the epsilon subunit are associated with congenital myasthenic syndrome.

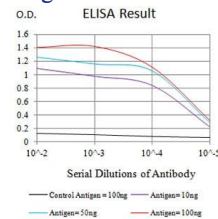
### Recommended Dilution

WB: 1:500 - 1:2000

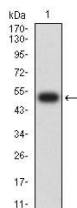
ELISA: 1:10000

Not yet tested in other applications.

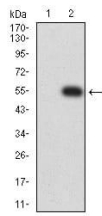
### Images



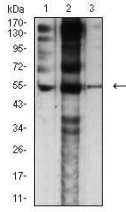
Black line: Control Antigen (100 ng);Purple line: Antigen (10ng); Blue line: Antigen (50 ng); Red line:Antigen (100 ng)



Western blot analysis using CHRNE mAb against human CHRNE (AA: extra 21-239) recombinant protein. (Expected MW is 50.1 kDa)



Western blot analysis using CHRNE mAb against HEK293 (1) and CHRNE (AA: extra 21-239)-hIgGFc transfected HEK293 (2) cell lysate.



Western blot analysis using CHRNE mouse mAb against Jurkat (1), C6 (2), and SK-N-SH (2) cell lysate.

### Storage

Store at 4°C short term. Aliquot and store at -20°C long term.

501 Changsheng S Rd, Nanhu Dist, Jiaxing, Zhejiang, China

Tel: 86 21 31007137 | E-mail: [save@bt-laboratory.com](mailto:save@bt-laboratory.com) | [www.bt-laboratory.com](http://www.bt-laboratory.com)