

PPM1A Monoclonal Antibody

Description

Product type	Antibody
Code	BT-MCA2944
Host	Mouse
Isotype	Mouse IgG1
Size	100μL, 50μL
Immunogen	Purified recombinant fragment of human PPM1A (AA: 202-382) expressed in E. Coli.
Mol wt	42.4kDa
Species reactivity	Human,Monkey
Clonality	Monoclonal
Recommended application	WB,FCM
Concentration	N/A
Full name	N/A
Synonyms	PP2CA;PP2Calpha;PP2C-ALPHA

This product is for research use only, not for use in human, therapeutic or diagnostic procedure.

Background

The protein encoded by this gene is a member of the PP2C family of Ser/Thr protein phosphatases. PP2C family members are known to be negative regulators of cell stress response pathways. This phosphatase dephosphorylates, and negatively regulates the activities of, MAP kinases and MAP kinase kinases. It has been shown to inhibit the activation of p38 and JNK kinase cascades induced by environmental stresses. This phosphatase can also dephosphorylate cyclin-dependent kinases, and thus may be involved in cell cycle control. Overexpression of this phosphatase is reported to activate the expression of the tumor suppressor gene TP53/p53, which leads to G2/M cell cycle arrest and apoptosis. Three alternatively spliced transcript variants encoding distinct isoforms have been described.

Recommended Dilution

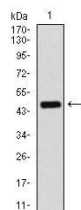
WB: 1:500 - 1:2000

FCM: 1:200 - 1:400

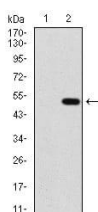
ELISA: 1:10000

Not yet tested in other applications.

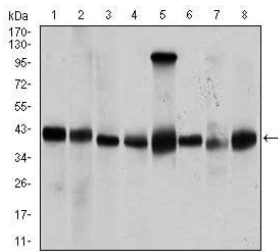
Images



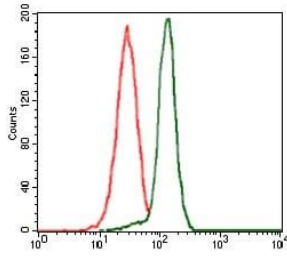
Western blot analysis using PPM1A mAb against human PPM1A recombinant protein. (Expected MW is 45.9 kDa)



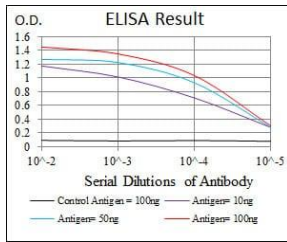
Western blot analysis using PPM1A mAb against HEK293 (1) and PPM1A (AA: 202-382)-hIgGFc transfected HEK293 (2) cell lysate.



Western blot analysis using PPM1A mouse mAb against Jurkat (1), Jurkat (2), A431 (3), HeLa (4), HEK293 (5), Raji (6), MCF-7 (7), and COS7 (8) cell lysate.



Flow cytometric analysis of HeLa cells using PPM1A mouse mAb (green) and negative control (red).



Black line: Control Antigen (100 ng); Purple line: Antigen(10ng); Blue line: Antigen (50 ng); Red line: Antigen (100 ng);

Storage

Store at 4°C short term. Aliquot and store at -20°C long term.

501 Changsheng S Rd, Nanhu Dist, Jiaxing, Zhejiang, China

Tel: 86 21 31007137 | E-mail: save@bt-laboratory.com | www.bt-laboratory.com