

ITGB1 Monoclonal Antibody

Description

Product type	Antibody
Code	BT-MCA2961
Host	Mouse
Isotype	Mouse IgG1
Size	100μL, 50μL
Immunogen	Purified recombinant fragment of human ITGB1 expressed in E. Coli.
Mol wt	88.4kDa
Species reactivity	Human,Monkey
Clonality	Monoclonal
Recommended application	WB,IHC,FCM
Concentration	N/A
Full name	N/A
Synonyms	CD29;FNRB;MDF2;VLAB;GPIIA;MSK12;VLA-BETA

This product is for research use only, not for use in human, therapeutic or diagnostic procedure.

Background

Integrins are heterodimeric proteins made up of alpha and beta subunits. At least 18 alpha and 8 beta subunits have been described in mammals. Integrin family members are membrane receptors involved in cell adhesion and recognition in a variety of processes including embryogenesis, hemostasis, tissue repair, immune response and metastatic diffusion of tumor cells. This gene encodes a beta subunit. Multiple alternatively spliced transcript variants which encode different protein isoforms have been found for this gene.

Recommended Dilution

WB: 1:500 - 1:2000

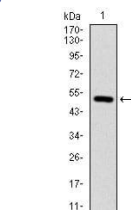
IHC-p: 1:200 - 1:1000

FCM: 1:200 - 1:400

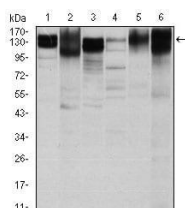
ELISA: 1:10000

Not yet tested in other applications.

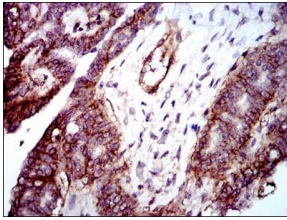
Images



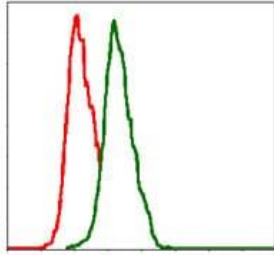
Western blot analysis using ITGB1 mAb against human ITGB1 (AA: 50-270) recombinant protein.
(Expected MW is 50.6 kDa)



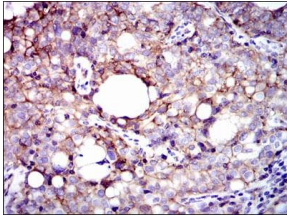
Western blot analysis using ITGB1 mouse mAb against HeLa (1), HepG2 (2), A549 (3), Jurkat(4), L1210 (5) and Cos7 (6) cell lysate.



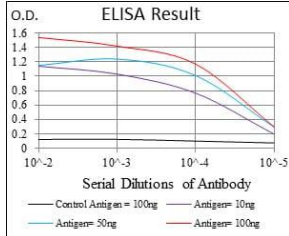
Immunohistochemical analysis of paraffin-embedded ovarian cancer tissues using ITGB1 mouse mAb with DAB staining.



Flow cytometric analysis of HeLa cells using ITGB1 mouse mAb (green) and negative control (red).



Immunohistochemical analysis of paraffin-embedded cervical cancer tissues using ITGB1 mouse mAb with DAB staining.



Black line: Control Antigen (100 ng); Purple line: Antigen(10ng); Blue line: Antigen (50 ng); Red line: Antigen (100 ng);

Storage

Store at 4°C short term. Aliquot and store at -20°C long term.

501 Changsheng S Rd, Nanhu Dist, Jiaxing, Zhejiang, China

Tel: 86 21 31007137 | E-mail: save@bt-laboratory.com | www.bt-laboratory.com