

KDM3A Monoclonal Antibody

Description

Product type	Antibody
Code	BT-MCA2987
Host	Mouse
Isotype	Mouse IgG1
Size	100µL, 50µL
Immunogen	Purified recombinant fragment of human KDM3A expressed in E. Coli.
Mol wt	147kDa
Species reactivity	Human
Clonality	Monoclonal
Recommended application	WB, ICC
Concentration	N/A
Full name	N/A
Synonyms	TSGA;JMJD1;JHDM2A;JHMD2A;JMJD1A;KIAA0742;DKFZp686A24246;DKFZp686P07111;KDM3A

This product is for research use only, not for use in human, therapeutic or diagnostic procedure.

Background

This gene encodes a zinc finger protein that contains a jumonji domain and may play a role in hormone-dependent transcriptional activation. JMJD1A functions as a mono- and dimethylation-specific demethylase, binding iron and alpha-ketoglutarate as cofactors and demethylating Lysine 9 of Histone H3. This suggests that JMJD1A plays a central role in the histone code and participates in nuclear hormone receptor-based transcriptional regulation. In addition, JMJD1A plays an important role in the regulation of cell growth during development and in chromatin regulation. JMJD1A directly regulates the expression of TNP1 and Protamine 1 (proteins required for the proper packaging and condensation of sperm chromatin) and, therefore, plays an essential role in spermatogenesis.

Recommended Dilution

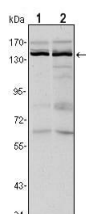
WB: 1:500 - 1:2000

ICC: 1:200 - 1:1000

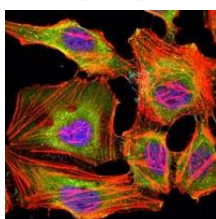
ELISA: 1:10000

Not yet tested in other applications.

Images



Western blot analysis using KDM3A mouse mAb against HeLa (1) and HepG2 (2) cell lysate.



Immunofluorescence analysis of HeLa cells using KDM3A mouse mAb (green). Blue: DRAQ5 fluorescent DNA dye. Red: Actin filaments have been labeled with Alexa Fluor-555 phalloidin.

Storage

Store at 4°C short term. Aliquot and store at -20°C long term.

501 Changsheng S Rd, Nanhu Dist, Jiaxing, Zhejiang, China

Tel: 86 21 31007137 | E-mail: save@bt-laboratory.com | www.bt-laboratory.com