

## STAT5A Monoclonal Antibody

### Description

<b>Product type</b>	Antibody
<b>Code</b>	BT-MCA2999
<b>Host</b>	Mouse
<b>Isotype</b>	Mouse IgG1
<b>Size</b>	100µL, 50µL
<b>Immunogen</b>	Purified recombinant fragment of human STAT5A (AA: 583-794 ) expressed in E. Coli.
<b>Mol wt</b>	90.6kDa
<b>Species reactivity</b>	Human
<b>Clonality</b>	Monoclonal
<b>Recommended application</b>	WB,IHC,ICC,FCM
<b>Concentration</b>	N/A
<b>Full name</b>	N/A
<b>Synonyms</b>	MGF;STAT5

This product is for research use only, not for use in human, therapeutic or diagnostic procedure.

### Background

N/A

### Recommended Dilution

WB: 1:500 - 1:2000

IHC-p: 1:200 - 1:1000

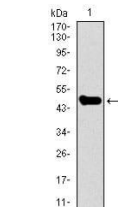
ICC: 1:50

FCM: 1:200 - 1:400

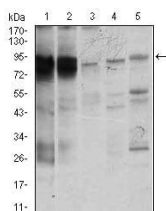
ELISA: Propose dilution 1:10000

Not yet tested in other applications.

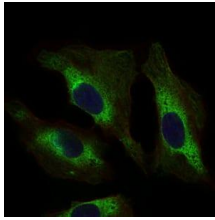
### Images



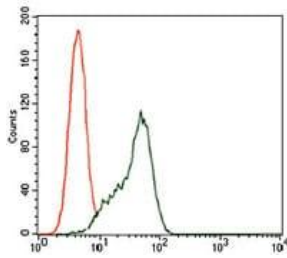
Western blot analysis using STAT5A mAb against human STAT5A recombinant protein. (Expected MW is 49.3 kDa)



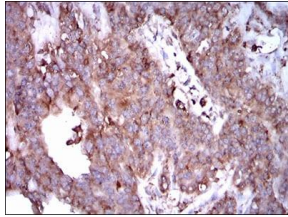
Western blot analysis using STAT5A mouse mAb against K562 (1), MOLT4 (2), HeLa (3), Jurkat (4), and A431 (5) cell lysate.



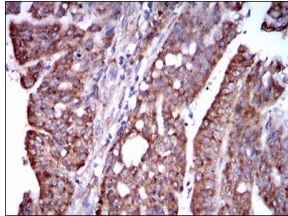
Immunofluorescence analysis of HeLa cells using STAT5A mouse mAb (green). Blue: DRAQ5 fluorescent DNA dye.



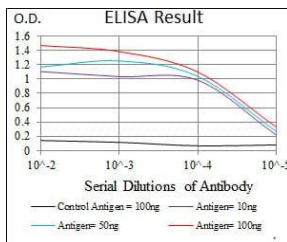
Flow cytometric analysis of K562 cells using STAT5A mouse mAb (green) and negative control (red).



Immunohistochemical analysis of paraffin-embedded ovarian cancer tissues using STAT5A mouse mAb with DAB staining.



Immunohistochemical analysis of paraffin-embedded rectum cancer tissues using STAT5A mouse mAb with DAB staining.



Black line: Control Antigen (100 ng); Purple line: Antigen(10ng); Blue line: Antigen (50 ng); Red line: Antigen (100 ng);

## Storage

Store at 4°C short term. Aliquot and store at -20°C long term.

501 Changsheng S Rd, Nanhu Dist, Jiaxing, Zhejiang, China

Tel: 86 21 31007137 | E-mail: save@bt-laboratory.com | www.bt-laboratory.com