

CD15 Monoclonal Antibody

Description

Product type	Antibody
Code	BT-MCA3080
Host	Mouse
Isotype	Mouse IgG1
Size	100µL, 50µL
Immunogen	Synthesized peptide of human CD15.
Mol wt	59kDa
Species reactivity	Human
Clonality	Monoclonal
Recommended application	IHC,ICC
Concentration	N/A
Full name	N/A
Synonyms	LeX;CD15;ELFT;FCT3A;FUTIV;SSEA-1;FUC-TIV

This product is for research use only, not for use in human, therapeutic or diagnostic procedure.

Background

The product of this gene transfers fucose to N-acetylglucosamine polysaccharides to generate fucosylated carbohydrate structures. It catalyzes the synthesis of the non-sialylated antigen, Lewis x (CD15).

Recommended Dilution

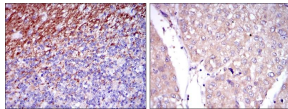
IHC-p: 1:200 - 1:1000

ICC: 1:200 - 1:1000

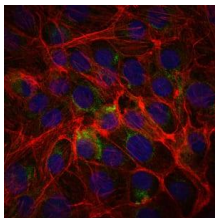
ELISA: 1:10000

Not yet tested in other applications.

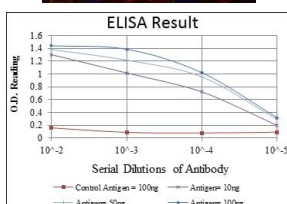
Images



Immunohistochemical analysis of paraffin-embedded human cerebellum tissues (left) and human liver cancer tissues (right) using CD15 mouse mAb with DAB staining.



Immunofluorescence analysis of PC-2 cells using CD15 mouse mAb (green). Blue: DRAQ5 fluorescent DNA dye. Red: Actin filaments have been labeled with Alexa Fluor-555 phalloidin.



Red: Control Antigen (100ng); Purple: Antigen (10ng); Green: Antigen (50ng); Blue: Antigen (100ng);

Storage

Store at 4°C short term. Aliquot and store at -20°C long term.

501 Changsheng S Rd, Nanhu Dist, Jiaxing, Zhejiang, China

Tel: 86 21 31007137 | E-mail: save@bt-laboratory.com | www.bt-laboratory.com