

## ITGA5 Monoclonal Antibody

### Description

<b>Product type</b>	Antibody
<b>Code</b>	BT-MCA3129
<b>Host</b>	Mouse
<b>Isotype</b>	Mouse IgG2a
<b>Size</b>	100µL, 50µL
<b>Immunogen</b>	Purified recombinant fragment of human ITGA5 expressed in E. Coli.
<b>Mol wt</b>	114kDa
<b>Species reactivity</b>	Human
<b>Clonality</b>	Monoclonal
<b>Recommended application</b>	IHC,FCM
<b>Concentration</b>	N/A
<b>Full name</b>	N/A
<b>Synonyms</b>	FNRA;CD49e;VLA5A;ITGA5

**This product is for research use only, not for use in human, therapeutic or diagnostic procedure.**

### Background

The product of this gene belongs to the integrin alpha chain family. Integrins are heterodimeric integral membrane proteins composed of an alpha chain and a beta chain. This gene encodes the integrin alpha 5 chain. Alpha chain 5 undergoes post-translational cleavage in the extracellular domain to yield disulfide-linked light and heavy chains that join with beta 1 to form a fibronectin receptor. In addition to adhesion, integrins are known to participate in cell-surface mediated signalling. Integrin alpha 5 is a heterodimer that associates noncovalently with CD29/integrin beta 1 subunit to form the alpha-5-beta-1 very late antigen (VLA-5) complex. VLA-5 is a fibronectin receptor that is expressed on thymocytes, T-cells, monocytes and platelets. It is also found on very early B-cells and activated B-cells. VLA-5-mediated binding to fibronectin sends a costimulatory signal to T-cells and enhances Fc-gamma-R- and complement receptor-mediated phago-cytosis. It is also involved in monocyte migration into extracellular tissues.

### Recommended Dilution

WB: 1:500 - 1:2000

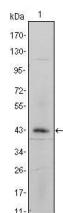
IHC-p: 1:200 - 1:1000

FCM: 1:200 - 1:400

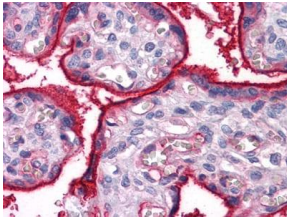
ELISA: 1:10000

Not yet tested in other applications.

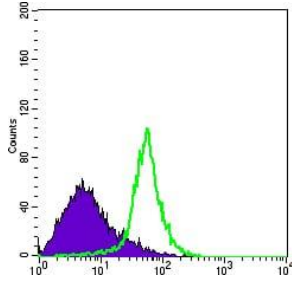
### Images



Western blot analysis using ITGA5 mouse mAb against ITGA5-hlgGfc transfected HEK293 cell lysate.



Immunohistochemical analysis of paraffin-embedded human Placenta tissues using ITGA5 mouse mAb



Flow cytometric analysis of HeLa cells using ITGA5 mouse mAb (green) and negative control (purple).

### Storage

Store at 4°C short term. Aliquot and store at -20°C long term.

501 Changsheng S Rd, Nanhu Dist, Jiaxing, Zhejiang, China

Tel: 86 21 31007137 | E-mail: [save@bt-laboratory.com](mailto:save@bt-laboratory.com) | [www.bt-laboratory.com](http://www.bt-laboratory.com)