

Nucleophosmin Monoclonal Antibody

Description

Product type	Antibody
Code	BT-MCA3151
Host	Mouse
Isotype	Mouse IgG1
Size	100µL, 50µL
Immunogen	Purified recombinant fragment of human NPM (2-265) expressed in E. Coli.
Mol wt	33kDa
Species reactivity	Human,Monkey
Clonality	Monoclonal
Recommended application	WB,IHC,ICC
Concentration	N/A
Full name	N/A
Synonyms	B23;NPM

This product is for research use only, not for use in human, therapeutic or diagnostic procedure.

Background

Nucleophosmin (NPM), also named B23 or NO38, is a major nucleolar protein which is 20 times more abundant in tumor or proliferating cells than in normal resting cells. NPM has been implicated in several distinct cellular functions, including assembly and transport of ribosomes, cytoplasmic/nuclear trafficking, regulation of DNA polymerase alpha activity, centrosome duplication and molecular chaperoning activities. The NPM is also known for its fusion with the anaplastic lymphoma kinase (ALK) receptor tyrosine kinase. The NPM portion contributes to transformation by providing a dimerization domain, which results in activation of the fused kinase.

Recommended Dilution

WB: 1:500 - 1:2000

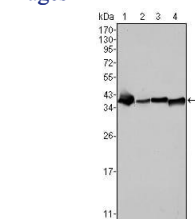
IHC-p: 1:200 - 1:1000

ICC: 1:200 - 1:1000

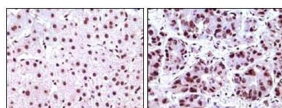
ELISA: 1:10000

Not yet tested in other applications.

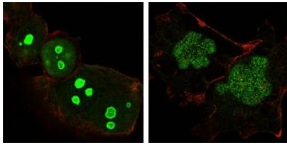
Images



Western blot analysis using NPM mouse mAb against SMMC-7721 (1), HepG2 (2), HeLa (3) and HEK293 (4) cell lysate.



Immunohistochemical analysis of paraffin-embedded human liver carcinoma tissues, showing nuclear localization using NPM mouse mAb with DAB staining.



Confocal Immunofluorescence analysis of HeLa (left) and NTERA-2 (right) cells using NPM mouse mAb (green). Red: Actin filaments have been labeled with DY-554 phalloidin.

Storage

Store at 4°C short term. Aliquot and store at -20°C long term.

501 Changsheng S Rd, Nanhu Dist, Jiaxing, Zhejiang, China

Tel: 86 21 31007137 | E-mail: save@bt-laboratory.com | www.bt-laboratory.com