

PRKDC Monoclonal Antibody

Description

Product type	Antibody
Code	BT-MCA3152
Host	Mouse
Isotype	Mouse IgG1
Size	100µL, 50µL
Immunogen	Purified recombinant fragment of human PRKDC expressed in E. Coli.
Mol wt	46.9kDa
Species reactivity	Human
Clonality	Monoclonal
Recommended application	IHC,ICC
Concentration	N/A
Full name	N/A
Synonyms	HYRC;p350;DNAPK;DNP1;HYRC1;XRCC7;DNA-PKcs;PRKDC

This product is for research use only, not for use in human, therapeutic or diagnostic procedure.

Background

The PRKDC gene encodes the catalytic subunit of a nuclear DNA-dependent serine/threonine protein kinase (DNA-PK). The second component is the autoimmune antigen Ku (MIM 152690), which is encoded by the G22P1 gene on chromosome 22q. On its own, the catalytic subunit of DNA-PK is inactive and relies on the G22P1 component to direct it to the DNA and trigger its kinase activity; PRKDC must be bound to DNA to express its catalytic properties.

Recommended Dilution

WB: 1:500 - 1:2000

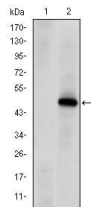
IHC-p: 1:200 - 1:1000

ICC: 1:200 - 1:1000

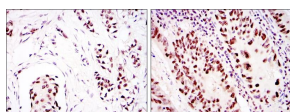
ELISA: 1:10000

Not yet tested in other applications.

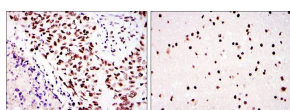
Images



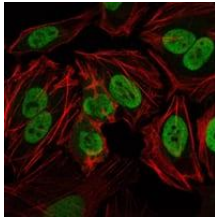
Western blot analysis using PRKDC mAb against HEK293 (1) and PRKDC(AA: 2638-2971)-hIgGFc transfected HEK293 (2) cell lysate.



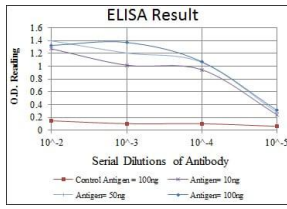
Immunohistochemical analysis of paraffin-embedded breast cancer (left) and colon cancer (right) using PRKDC mouse mAb with DAB staining.



Immunohistochemical analysis of paraffin-embedded lung cancer (left) and brain tissues (right) using PRKDC mouse mAb with DAB staining.



Immunofluorescence analysis of HeLa cells using PRKDC mouse mAb (green). Red: Actin filaments have been labeled with Alexa Fluor-555 phalloidin.



Red: Control Antigen (100ng); Purple: Antigen (10ng); Green: Antigen (50ng); Blue: Antigen (100ng);

Storage

Store at 4°C short term. Aliquot and store at -20°C long term.

501 Changsheng S Rd, Nanhui Dist, Jiading, Zhejiang, China

Tel: 86 21 31007137 | E-mail: save@bt-laboratory.com | www.bt-laboratory.com