

## LCN1 Monoclonal Antibody

### Description

<b>Product type</b>	Antibody
<b>Code</b>	BT-MCA3193
<b>Host</b>	Mouse
<b>Isotype</b>	Mouse IgG1
<b>Size</b>	100 $\mu$ L, 50 $\mu$ L
<b>Immunogen</b>	Purified recombinant fragment of LCN1 expressed in E. Coli.
<b>Mol wt</b>	19.2kDa
<b>Species reactivity</b>	Human
<b>Clonality</b>	Monoclonal
<b>Recommended application</b>	IHC,ICC
<b>Concentration</b>	N/A
<b>Full name</b>	N/A
<b>Synonyms</b>	TP;PMFA;VEGP

This product is for research use only, not for use in human, therapeutic or diagnostic procedure.

### Background

LCN1: lipocalin 1 (tear prealbumin), also known as TP, PMFA, VEGP. Entrez Protein: NP\_002288. The protein belongs to the lipocalin family. Lipocalins are a group of extracellular proteins that are able to bind lipophiles by enclosure within their structures to minimize solvent contact. This protein may bind hydrophobic ligands and inhibit cysteine proteinases. It may also play a role in taste reception and could be necessary for the concentration and delivery of sapid molecules in the gustatory system.

### Recommended Dilution

WB: 1:500 - 1:2000

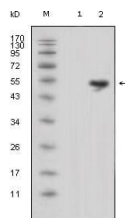
IHC-p: 1:200 - 1:1000

ICC: 1:200 - 1:1000

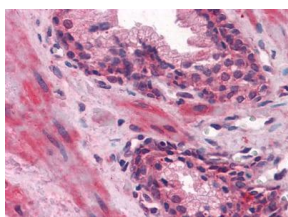
ELISA: 1:10000

Not yet tested in other applications.

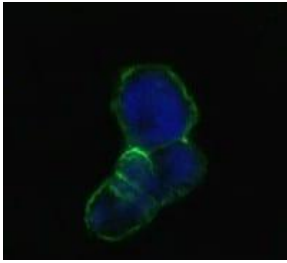
### Images



Western blot analysis using LCN1 mouse mAb against HEK293 (1) and LCN1-hIgGFc transfected HEK293 cell lysate (2).



Immunohistochemical analysis of paraffin-embedded human Prostate tissues using LCN1 mouse mAb



Confocal Immunofluorescence analysis of methanol-fixed HEK293 cells trasfected with LCN1-hlgGfC using LCN1 mouse mAb(green), showing membrane localization. Blue: DRAQ5 fluorescent DNA dye.

### Storage

Store at 4°C short term. Aliquot and store at -20°C long term.

501 Changsheng S Rd, Nanhu Dist, Jiaxing, Zhejiang, China

Tel: 86 21 31007137 | E-mail: [save@bt-laboratory.com](mailto:save@bt-laboratory.com) | [www.bt-laboratory.com](http://www.bt-laboratory.com)