

KIF11 Monoclonal Antibody

Description

Product type	Antibody
Code	BT-MCA3211
Host	Mouse
Isotype	Mouse IgG1
Size	100µL, 50µL
Immunogen	Purified recombinant fragment of human KIF11 expressed in E. Coli.
Mol wt	119kDa
Species reactivity	Human
Clonality	Monoclonal
Recommended application	WB,IHC,FCM
Concentration	N/A
Full name	N/A
Synonyms	EG5;HKSP;KNSL1;MCLMR;TRIP5

This product is for research use only, not for use in human, therapeutic or diagnostic procedure.

Background

N/A

Recommended Dilution

WB: 1:500 - 1:2000

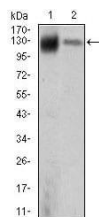
IHC-p: 1:200 - 1:1000

FCM: 1:200 - 1:400

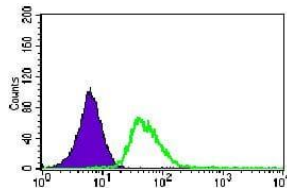
ELISA: 1:10000

Not yet tested in other applications.

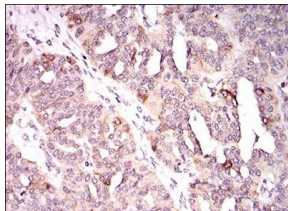
Images



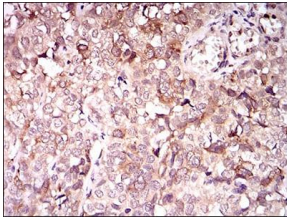
Western blot analysis using KIF11 mouse mAb against MCF-7 (1) and HeLa (2) cell lysate.



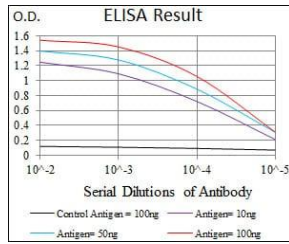
Flow cytometric analysis of HeLa cells using KIF11 mouse mAb (green) and negative control (purple).



Immunohistochemical analysis of paraffin-embedded ovarian cancer tissues using KIF11 mouse mAb with DAB staining.



Immunohistochemical analysis of paraffin-embedded bladder cancer tissues using KIF11 mouse mAb with DAB staining.



Red: Control Antigen (100ng); Purple: Antigen (10ng); Green: Antigen (50ng); Blue: Antigen (100ng);

Storage

Store at 4°C short term. Aliquot and store at -20°C long term.

501 Changsheng S Rd, Nanhu Dist, Jiaxing, Zhejiang, China

Tel: 86 21 31007137 | E-mail: save@bt-laboratory.com | www.bt-laboratory.com